



**OCM**

**- 100 Years of Strength -**

Products Catalog

# CONCRETE ACCESSORIES

## -STEEL/PLYWOOD FORMING SYSTEMS



## -FORMING HARDWARE



## -REBAR SUPPORTS STEEL AND PLASTIC



## -ADEKA AND BENTOSWELL WATERSTOPS



*OCM, Inc.*  
1215 Henri Drive  
Wauconda, IL 60084  
Telephone: 866-457-5710  
FAX: 847-462-4259  
[www.ocm-inc.com](http://www.ocm-inc.com)

[www.ocm-inc.com](http://www.ocm-inc.com)

## Waterstop

Adeka Ultra Seal . . . . .	4
Ultra-C-Ring . . . . .	8
OCM BENTOSWELL . . . . .	9

## Forming Hardware

### Coil Thread Products

Coil Nut . . . . .	14
Coil Bolt . . . . .	14
Long Coil Bolt . . . . .	14
Heavy Duty "Tall" Coil Nut . . . . .	14
Coil Rod . . . . .	14
Coil Rod Coupler . . . . .	15
Weld Angle Bracket . . . . .	15
Coil Wing Nut . . . . .	15
Coil Thread Drop In Anchors . . . . .	15
Coil Eye Bolt . . . . .	15
Coil Eye Nut . . . . .	15
Batter Washers . . . . .	16
Fitting Up "Speed" Bolt . . . . .	16
Fitting Up "Speed" Nut . . . . .	16
Flat Washer . . . . .	16
1/2" Coil Tie - Conefast . . . . .	16
3/4" Coil Tie - Conefast . . . . .	17
Conefast Plastic Cone . . . . .	17
Cone Wrench . . . . .	17
1/2" Coil Tie - Standard . . . . .	17
3/4" Coil Tie - Standard . . . . .	17
Combo Tie . . . . .	18
Coil Loop Inserts . . . . .	18

### Light Duty Forming Products

Snap Tie . . . . .	18
Snap Tie with Cring 25-UCR . . . . .	19
Snap Tie Heavy Duty . . . . .	19
Snap Tie Wedge . . . . .	19
A Clamp . . . . .	19
C Clamp . . . . .	20
Snap Tie Extender . . . . .	20
Snap Bracket . . . . .	20
Form Liner Clamp . . . . .	20
Jahn Scaffold Bracket . . . . .	20
A-90 Scaffold Bracket Jack . . . . .	20
Double Waler Bracket . . . . .	20
Snap Tie Corner Lock . . . . .	21
Speed Lock Tie . . . . .	21
Speed Lock Stiff Back Bracket . . . . .	21
Speed Lock Bracket . . . . .	21

### Steel-Plywood Forms and Accessories

Handset Concrete Forming System . . . . .	22
X Flat Tie . . . . .	26
X Flat Tie - Heavy Duty . . . . .	26
Loop Tie (Loop Panel Tie) . . . . .	27
Cring 25-UCR-H . . . . .	27
Base Tie . . . . .	27
Wedge Bolt . . . . .	28
Long Wedge Bolt . . . . .	28
Short Wedge Bolt . . . . .	28
Gang Wedge Bolt . . . . .	28
Turnbuckles . . . . .	28
Heavy Duty Turnbuckles . . . . .	28
Hand-Set Scaffolding Bracket . . . . .	28
One Piece Waler Clamp . . . . .	29
One Piece Waler Clamp - Heavy Duty . . . . .	29
Z Tie Holder . . . . .	29
J-Strongback Hook . . . . .	29
Ply-Lag . . . . .	29
Gang Waler Plate . . . . .	29
S-Wedge . . . . .	29

Waler Tie . . . . .	30
Strongback Tie . . . . .	30
Metal Form Patches . . . . .	30
Pipe Braces . . . . .	30

### Light Duty Forming Products

Aluminum Form Tie . . . . .	30
Aluminum Form Pin . . . . .	31
Aluminum Form Wedge . . . . .	31
Silver Bullet Base Pin . . . . .	31
Aluminum Form Angle Pin . . . . .	31
Aluminum Form Accessories . . . . .	31
Aluminum Form Waler Brackets . . . . .	31
Aluminum Form . . . . .	32
Resi-Ply Form Tie . . . . .	33
Pencil Rod . . . . .	33
Pencil Rod Clamp . . . . .	33
Pencil Rod Puller . . . . .	33
Metal Keyway . . . . .	33
Metal Keyway Stakes . . . . .	34
Steel Stakes . . . . .	34
Stake Puller . . . . .	34
Dowel Cap . . . . .	34
Plastic Dowel Cap . . . . .	34
Smooth Dowel . . . . .	35
Spreader Cleats . . . . .	35
Monolithic Pouring Straps . . . . .	35
Stacking Tie (Snapie Tie) . . . . .	35
Stacking Tie Wedge . . . . .	35
Screed Pads & Posts . . . . .	36
Screed Hooks . . . . .	36
Footing Ties . . . . .	36
Anchor Bolt . . . . .	36
Flat Washer for Anchor Bolt . . . . .	37
Anchor Bolt Nuts . . . . .	37
Anchor Bolt Washers . . . . .	37
T-Posts . . . . .	37
Rebar Cap . . . . .	37
Punched Hole Strapping . . . . .	37
Burke Bar / Pry Bar . . . . .	37

### Rebar Hand Tools and Accessories

Rebar Cutter-Bender . . . . .	38
Rebar Hickey Bender . . . . .	38
Rebar Hickey . . . . .	38
Tie Wire . . . . .	38
Binding Wire . . . . .	38
Tie Wire Reel . . . . .	38
Bag Tie . . . . .	38
Bag Tie Hand Twister . . . . .	38

### Heavy Duty Forming Products

She-Bolt . . . . .	41
Taper Tie . . . . .	41
Coil Nut Washer . . . . .	41
Acme Nut Washer . . . . .	41

## Bridge Forming Hardware

### Bridge Forming Products

Bridge Overhang Bracket . . . . .	42
Bridge Overhang Bracket Deep . . . . .	42
Bridge Overhang Bracket 72" . . . . .	42
Bridge Overhang Bracket Super Duty . . . . .	42
Bridge Overhang Bracket Junior . . . . .	42
Bridge Overhang Bracket Western . . . . .	42
Bridge Overhang Bracket Extension . . . . .	43
Bridge Overhang Bracket . . . . .	

Guard Rail Receptacle . . . . .	43
Conversion Kit . . . . .	43
Wall Plate Assembly . . . . .	43
Hook Bolt D1LA . . . . .	43

### Bridge Hangers

Exterior Bridge Hangers . . . . .	44
Interior Bridge Hangers . . . . .	46

## Bar Supports

### Steel Bar Supports

Slab Bolsters . . . . .	48
Beam Bolsters . . . . .	48
Continuous Mesh Chair . . . . .	50
Continuous High Chairs . . . . .	50
Individual High Chairs . . . . .	51
Individual Bar Chairs . . . . .	52
Footer Chairs . . . . .	52
Rod Chairs . . . . .	52
FS Stakes . . . . .	52

### All Plastic Bar Supports

Plastic Uni Chair . . . . .	54
Plastic Slab Bolster . . . . .	55
Plastic Paving Chairs . . . . .	56
Grade Chair with Base . . . . .	56
Wheel Spacers . . . . .	56
Castle Chairs . . . . .	57
Concrete Sleeves . . . . .	57
Rebar Saddle . . . . .	57
Adjustable Plastic Screed Chair . . . . .	57

## Other Concrete Accessories

### EURO Rod Products

Euro Rod . . . . .	58
Euro Rod Combo Plate . . . . .	59
Euro Rod Single Wing Nut . . . . .	59
Euro Rod Round Wing Nut . . . . .	59
Euro Rod Hex Couplers . . . . .	59
Euro Rod Hex Flange Nuts . . . . .	59
Euro Rod Round Huts with Hex End . . . . .	60
Euro Rod She Bolt Cones . . . . .	60
Weld Angle Bracket - Euro Thread . . . . .	60

### Scaffolding/Shoring Products

4x4 Shore Clamp . . . . .	60
4x4 Shore Jack . . . . .	60
Wire Shore Holder . . . . .	60
Reshore Spring . . . . .	60
Slab Grabber . . . . .	61

### Precast Products

Coil and Ferrule Inserts . . . . .	63
Precast Lifting Anchors . . . . .	63
Lifting Eye . . . . .	63
Precast Utility Anchors . . . . .	63
Ring Clutches . . . . .	63
Recess Member . . . . .	63
Coil Eye Nut . . . . .	63
Coil Eye Bolt . . . . .	63

### Miscellaneous Products

OCM Mesh Form . . . . .	64
Form Release . . . . .	65
Concrete Hoppers . . . . .	66
Masonry Wire/Ladder Mesh . . . . .	67

### Rebar Splicing Products

OS-Splice Clip . . . . .	69
--------------------------	----

## **A Global Leader In Metal Working**

**OCM, Inc.** is a subsidiary of OKABE Co., LTD. OKABE was founded in 1917 in Japan and has been a full service manufacturer and distributor of concrete construction supplies, and a world leader in the Metal Forming Industry for over eighty years. Through capital investment and strategic partnerships, Okabe has achieved sales of over one billion dollars and employs over 1,500 people worldwide. OKABE uses a broad range of metal forming technologies to provide a diverse selection of engineered fasteners and components.

OKABE Markets Include: Construction Industry, Concrete Forming Accessories, Waterstop Products, Scaffolding & Shoring Components, Rebar Splicing, Transportation Industry, Heavy and Medium Duty Truck O.E.M.'s, Light & Heavy Duty Trailer O.E.M.'s, Heavy Duty Truck and Trailer Aftermarkets, Automotive & Light Truck O.E.M.'s, Axle & Suspension O.E.M.'s, Wheel, Hub & Drum O.E.M.'s, Agricultural & Construction Machinery O.E.M.'s, and Civilian & Military Marine & Shipbuilding Industries

**OCM's** worldwide manufacturing base coupled with a North American distribution network provides our customers with sophisticated design support, engineered quality and globally competitive products. **OCM's** global quality policy is one of continuous education, statistical analysis and evaluation of our systems, processes and techniques. We are dedicated to provide the highest quality products, at a competitive price, through innovation and technical expertise and the utmost in customer care. We invite you to visit our website [www.ocm-inc.com](http://www.ocm-inc.com) or contact our sales department at **1-866-457-5710** with your product questions.

## **OCM Limited Warranty**

All recommendations, statements and technical data contained herein are based on tests we believe to be reliable and correct, however, accuracy and completeness of said tests are not guaranteed and are not provided as an express or implied warranty. User shall rely on his or her own information and tests to determine suitability of the product for the intended use and user assumes all risk and liability resulting from his or her use of the product. In the event that a product supplied by OCM, Inc proves to not meet the OCM, Inc. published dimensional or other specifications of the product, an OCM, Inc. representative will review such product and circumstances to determine whether a replacement is warranted. OCM, Inc.'s and its manufacturer's sole responsibility shall be to replace, at OCM, Inc.'s sole discretion that product or portion of the product which OCM, Inc. deems to be defective, within six months of the delivery of the product. OCM, Inc. disclaims all other warranties or conditions, whether express or implied, including any implied warranties of merchantability or fitness for any particular purpose. In no event shall OCM, Inc. or its parent or affiliated companies be liable for delay caused by defects, for loss of use, or for any indirect, incidental, special, or consequential damages or for any charges or expenses of any nature whatsoever. In no event shall OCM's liability exceed the purchase price paid for the particular affected OCM, Inc. products.

## Adeka Ultra Seal – Waterstop Products

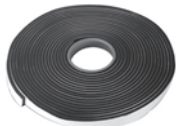
Adeka Ultra Seal is an innovative “Double-Locking” hydrophilic rubber waterstop. Adeka stops water by compression of the rubber and by hydrophilic expansion pressure when the seal is exposed to water. Adeka has been a leading hydrophilic rubber waterstop since 1977.

### Benefit

1. Controlled expansion when exposed to water.
2. Easy installation.
3. Stop water leakage by volume (expansion) pressure.
4. Stable expansion ability in a variety of water conditions.  
(Example seawater, cement water.)
5. Excellent elasticity.



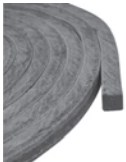
**MC-2010MN** – Hydrophilic strip with embedded stainless steel net. Cross section is 20mm X 10mm, (3/4" X 3/8"). Replaces conventional PVC in non-moving joints. Will withstand 150 foot hydrostatic head pressure. **NSF certified for potable water.**



**MC-2005T**



**MC-2005T** – Hydrophilic strip with adhesive back. Cross section is 20mm X 10mm (3/4" X 1/4"). Typically used for sealing piping penetrations cast-in-place through walls/slabs or through block outs in existing structures. Excellent for stopping water intrusion along cast-in-place H-beams.



**KM-3030M**



**KM-3030M** – Hydrophilic strip with embedded stainless steel net. Cross section is 30mm X 30mm (1 1/8" X 1 1/8"). Typically used in 1/2" expansion joints where expansion does not exceed 1/2". Excellent for shear movement and isolation joints.



**KBA-1510FP**



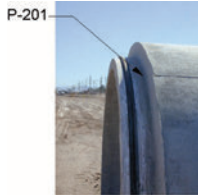
**KBA-1510FP** – Hydrophilic strip. Cross section is 15mm X 10mm (5/8" X 3/8"). Typically used in precast, non-moving joint where minimal concrete coverage is available (greater than 1"), and concrete containment curbs. Will withstand up to 25 foot hydrostatic head.



**KM-String**



**KM-String** – Hydrophilic string (rope). Cross section size varies from 4mm ~ 24mm (approximately  $\frac{3}{16}$ " ~ 1"). Used to waterproof sheet piles and cracks in the presence of running water. String should be 1.2 times the width of the gap being filled.



**P201A** – Hydrophilic paste in 11 ounce cartridge or 3.17 gallon pails. One of the most versatile Adeka products. Used in precast segments, piping penetrations, sheet pile interlocks, in combination with other Adeka strip products on rough concrete, crack, joint repair and many other applications.

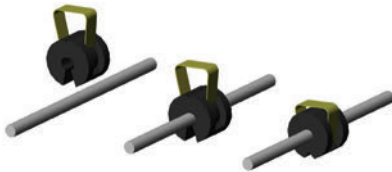


**A-30**

**A30** – Two component hydrophilic liquid in 4 gallon sets. Typically used to seal sheet pile interlocks **prior to driving**.



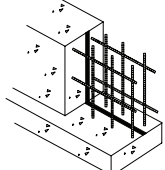
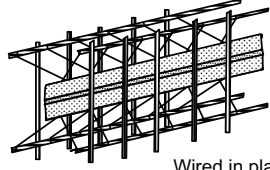
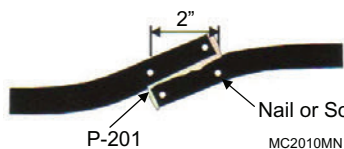
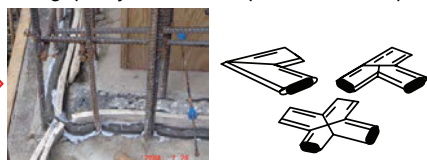
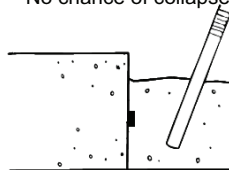
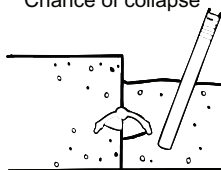
**75BRTAPE** – Butyl Rubber Adhesive Tape. 1/8" x 3/4" (50 ft. roll/8 per case). Used with: MC2010MN; MC2005T; KBA1510FP; KM3030M.



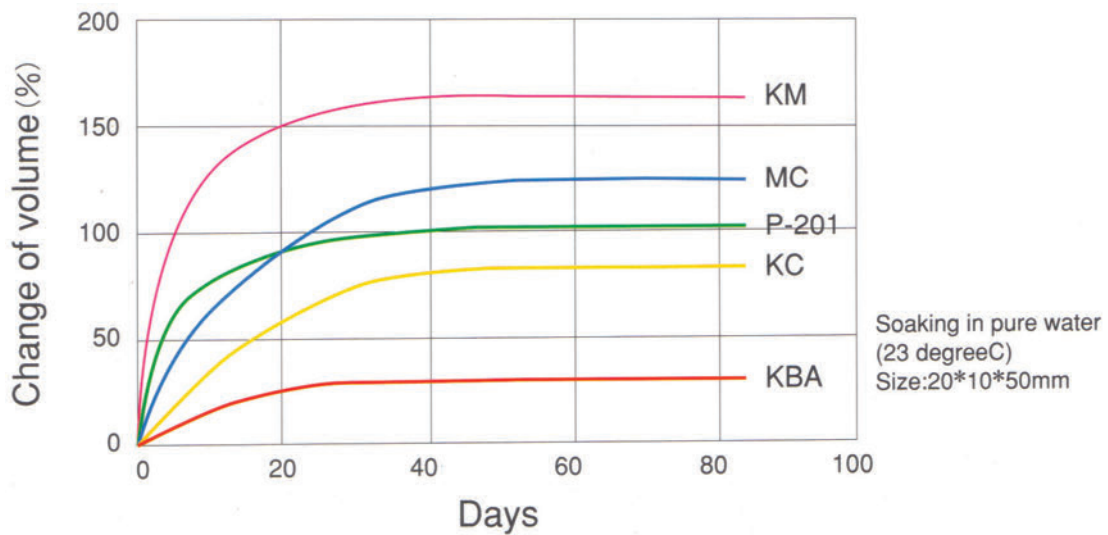
**Ultra C Ring** – The OCM Ultra C Ring is a clip on hydrophilic waterstop attachment for the form tie. The Ultra C Ring expands when it comes in contact with dampness and therefore seals off water entirely. The innovative feature of the Ultra C Ring is the fact that it can be clipped on after the form tie is completely installed or used to repair a problem.

Typical use and General Condition

		Construction/ Cold Joint	Pipe	Precast	Sheet Pile	Expansion Joint
Pre-Formed	MC2010MN	○	○			
	KBA	○	○	○		
	KM3030M	○				○
	MC2005T		○			
	KM String				○	
Liquid/ Paste	P201	○	○	○	○	
	A30				○	

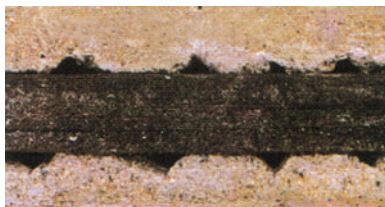
ADEKA Ultra Seal	PVC Water Stop
<p>Easy and cost effective installation</p> 	<p>Labor intensive installation - more cost</p>  <p>Wired in place</p>
<p>Welding is NOT required on splices or corners</p>  <p>2" Nail or Screw P-201 MC2010MN Application</p>	<p>Welding quality is critical for perfect waterstop</p> 
<p>No chance of collapse</p> 	<p>Chance of collapse</p> 

**Change of Volume of Adeka Ultra Seal**

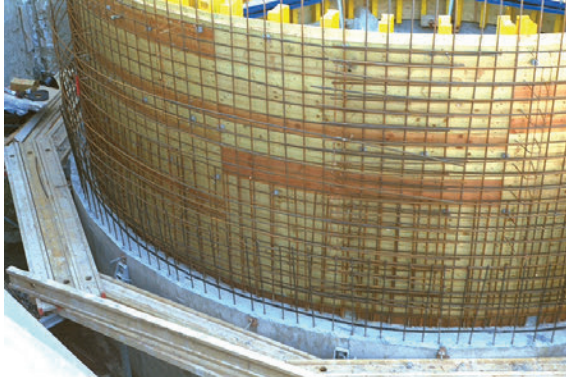


Before water swelling

After water swelling



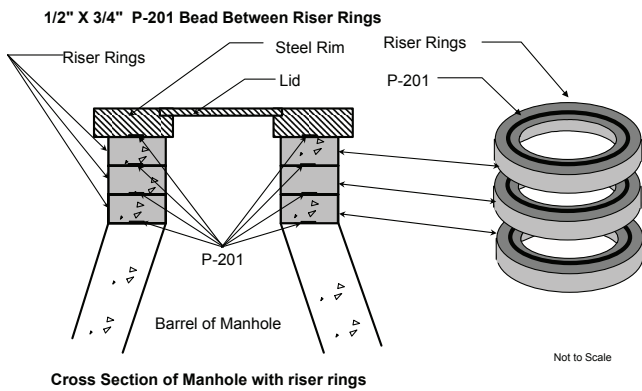
## Applications



Potable Water Tank



Rough Concrete Cold Joint



Precast Manhole Joint



Piping Penetration



Sheet Pile Interlock



Tunnel Segment Seal

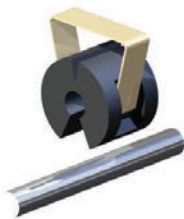


**Field-Installed Hydrophilic Waterstop Ring**  
**ULTRA-C-RING**

**FEATURES+BENEFITS**

- Prevents water leakage along tie penetrations.
- Easy attachment to the tie.
- The ULTRAC-RING is a Hydrophilic Waterstop. (that swells when in contact with water, stops water penetration)
- Versatile can be used with : SNAP TIES, LOOP TIES, HEAVY DUTY LOOP TIES, CAM-LOCK TIES.
- Can be installed with formwork already assembled.
- Proven to be more successful in stopping water penetration than traditional neoprene washer.
- Avoid special orders, long lead times, and expedited freight charges.

**INSTALLATION**

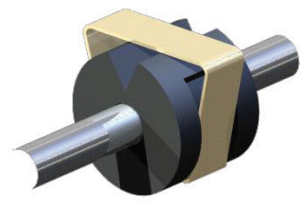


**1.** Place the ULTRA-C-RING onto the Tie

**PUSH!!**



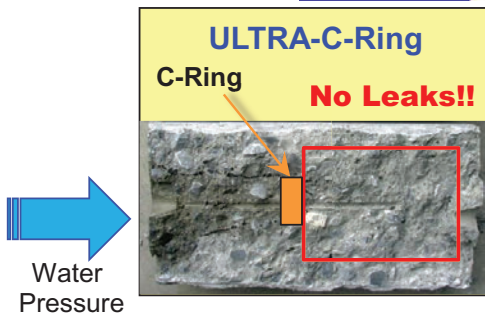
**2.** Push the Clip down



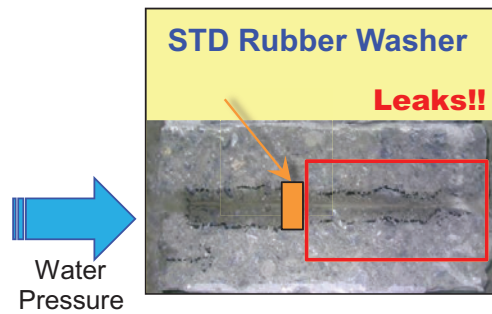
**3.** Done

**Water Penetration Test Result**

☆ Actual Product Test



VS.



**Product Information**

Part No.	For Use With	Box Quantity
25-UCR	Snap Ties, Standard Loop Ties	100 pcs
25-UCR-H	Heavy Duty Loop Ties, Heavy Duty Snap Ties, Cam-Lock Ties	100 pcs

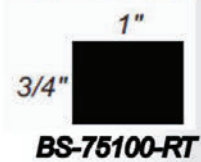




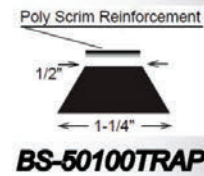
## **BENTOSWELL WATERSTOP PRODUCTS**

**EXPANDING CONCRETE JOINT WATERSTOP**

**-OCM BENTOSWELL RT**



**-OCM BENTOSWELL  
TRAPEZOID**



**-OCM BENTOSWELL  
PRIMER 10.3 OZ TUBE**



**-OCM BENTOSWELL  
PRIMER 1 GALLON CAN**



[www.ocm-inc.com](http://www.ocm-inc.com)



**Product Information**

**BP-013 Bentoswell Primer  
Trowel-Grade Waterproofing Sealant**

**Description**

OCM, Inc BP-013 Bentoswell Primer is a trowel-grade sodium bentonite-butyl rubber sealant designed to be used as a detail accessory in conjunction with other waterproofing products for below-grade concrete water proofing. The material swells upon contact with water to provide a water-tight seal.

**Features**

Easy to apply
Bonds to most substrate materials
No primer or surface preparation required
Expands with water contact to create a water-tight seal

**Basic Use**

OCM, Inc BP-013 Bentoswell Primer is used as a flashing material around drains, mechanical and electrical penetrations, waterproofing transactions and terminations, inside corners and other critical areas, and on extremely irregular surfaces where conventional waterproofing membrane is not practical. The material can be used on structural concrete, masonry, wood, and most metal surfaces. It is also used as a primer for OCM Bentoswell bentonite water swelling strip water stop.

**Packaging**

BS-PRIMER-10.3, Bentoswell primer 10.3oz cartridge; 30 cartridges per case  
BS-PRIMER-1GAL, Bentoswell primer 1 gallon can; 4 cans per case

**Color**

Black

**Application Instructions**

Surfaces to be sealed should be clean and dry. Apply material at temperatures above 25°F. Condition material to 40°F minimum prior to application. Material is typically applied in 1/4" minimum thickness.

**Safety**

Prior to working with this or any product consult product labeling and Material Safety Data Sheet (MSDS) for necessary health and safety precautions.

**Storage and Shelf Life**

Store material at temperatures between 40-110°F (4-43°C). Shelf life is 12 months when stored as recommended.

**Technical Data**

Weight per Gallon	10.5 LB
Solids Content	80%
Sag Resistance	No sag
VOC Content	240 g/l
Unrestricted Swell	200%

Note: The foregoing information is published as general information only. The listed properties and performance characteristics are typical values and are not to be interpreted as manufacturing specifications.

**Caution**

All statements and technical information in this document are based on tests or data that OCM believes is reliable. However, OCM does not warrant or guarantee the accuracy or completeness of this information. The user has sole knowledge and control of factors that can affect the performance of OCM products in the users intended application. It is the user's responsibility to conduct tests to determine the compatibility of OCM product with the design, structure, and materials of the user's end product and the suitability of OCM product for the user's method of application and intended use. The user assumes all risk and liability arising out of such use.



## OCM BENTOSWELL

### Expanding Concrete Joint Waterstop

#### Description

OCM BENTOSWELL is a flexible concrete construction water swelling strip that provides a positive seal by expanding upon contact with moisture. OCM BENTOSWELL is a special blend of Butyl Rubber Polymers and Bentonite Clay that provides superior expansion characteristics in concrete construction joints. BENTOSWELL is an active Bentonite Waterstop that is designed to replace passive PVC dumbbell Waterstop in order to eliminate seam welding and split forming required with these types of Waterstops.

Bentoswell Waterstop is available in two different profiles. BS-75100-RT is a Rectangle shape measuring  $\frac{3}{4}$ " x 1". BS-50100TRAPP is a Trapezoid shape measuring  $\frac{1}{2}$ " at the small end and 1  $\frac{1}{4}$ " at the large end. This profile also includes a plastic reinforcing scrim to increase the tensile strength.

#### Features

Provides permanently flexible watertight joints
Quick and easy to install. Does not require skilled labor
Excellent adhesion to clean dry surfaces
Sealed joints will not shrink, harden, or oxidize over time
Effective, Simple, and economical sealing material for cast in place concrete joints.

#### Limitations

BENTOSWELL is not a self-adhering product, and the use of BENTOSWELL PRIMER is required for proper adhesion to concrete, metal, or PVC surfaces. Do not use mechanical fasteners exclusively to secure BENTOSWELL. But, mechanical fasteners can be used in conjunction with BENTOSWELL PRIMER to adhere BENTOSWELL Waterstop.

BENTOSWELL requires a 75mm(3") minimum concrete coverage to the exterior concrete surface.

BENTOSWELL should not be prehydrated by submersion or remain in contact with water prior to the concrete being poured. If ground water is contaminated, or is expected please contact an OCM Inc, representative for compatibility information.

## Product Information

#### Technical data

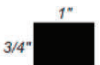
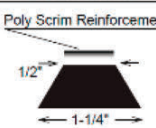
Specific Gravity (ASTM D71)	1.60
Hardness (ASTM D217)	75 dmm
Solids Content (ASTM C681)	100%
Unrestricted Swell	300%
Hydrostatic head resistant	231 ft (70m)

#### Applications

Cast in place applications	Slabs-on-Grade
Foundations	Storage Tanks
Pipe Penetrations	Box Culverts
Tunnels	Utility Vaults
Concrete Vaults	Burial Vaults
Septic Tanks	Retaining Walls

#### Installation

1. Brush and remove any loose dirt or particles from the surface.
2. Apply BENTOSWELL PRIMER by brush or trowel on to the clean concrete surface. BENTOSWELL PRIMER is available in 10.3 oz tubes or 1 gallon cans.
3. BENTOSWELL PRIMER should be installed in  $\frac{1}{4}$ " minimum thickness.
4. Remove release paper and firmly press the entire length of BENTOSWELL on to the primer surface within 30 minutes of primer application.
5. Tightly Butt Coil ends together to form a continuous waterstop. Do not overlap coil ends. Coils can be cut with a knife or utility blade.
6. Now you are ready to pour concrete.

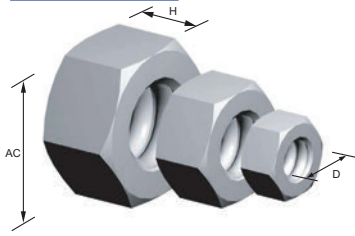
Part#	DESCRIPTION	Box Qty	Weight
BS-75100-RT 	3/4" x 1" x 16'-8" ROLLS (6 ROLLS PER CARTON)	100 LF	51 lbs
BS-50100TRAP 	1/2" x 1 1/4" x 20FT ROLLS (6 ROLLS PER CARTON)	120 LF	44 lbs
<b>Minimum 3" Concrete Coverage is required</b>			



# FORMING HARDWARE



## Coil Nuts

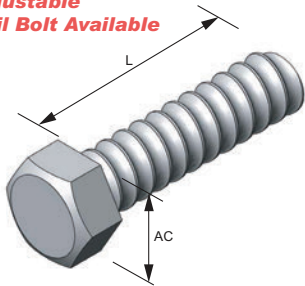


OCM Part No.	D Size	H Height	AC Across Flats	Carton Qty	Weight per 100pcs lbs	Safe Working Load lbs
50ACCN0P	1/2"	0.484	0.863	500	6.2	6,000
50ACCN0P-G	1/2"	0.484	0.863	500	6.2	6,000
62SFCN	5/8" Finished	0.547	0.930	500	11.4	8,000
75SFCN	3/4" Finished	0.641	1.107	500	11.4	9,000
75SCCN0P	3/4" Heavy	0.734	1.231	250	17.8	9,000
87SCCN0P	7/8"	0.859	1.416	250	27.6	16,000
100SCCN0P	1"	0.984	1.600	150	15.0	18,000
125SCCN0P	1-1/4"	1.219	2.123	70	75.2	27,000
150CCCN	1-1/2"	1.469	2.682	40	122.6	40,000

SWL provides a safety factor of approximately 2 to 1.

## Coil Bolts

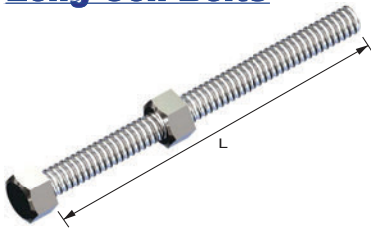
Adjustable  
Coil Bolt Available



OCM Part No.	D Size	L Length	AC Across Flats	Carton Qty	Weight per 100pcs lbs	Safe Working Load lbs
50A150CBH0P	1/2"	1-1/2"	3/4"	500	10.6	4,125
50A200CBH0P	1/2"	2"	3/4"	500	12.8	4,125
50A250CBH0P	1/2"	2-1/2"	3/4"	400	15.1	4,125
50A300CBH0P	1/2"	3"	3/4"	300	17.1	4,125
50A350CBH0P	1/2"	3-1/2"	3/4"	250	19.4	4,125
50A400CBH0P	1/2"	4"	3/4"	250	21.6	4,125
50A500CBH0P	1/2"	5"	3/4"	200	26.3	4,125
50A600CBH0P	1/2"	6"	3/4"	150	30.7	4,125
75S200CBH0P	3/4"	2"	1-1/8"	150	32.8	9,000
75S250CBH0P	3/4"	2-1/2"	1-1/8"	150	39.4	9,000
75S300CBH0P	3/4"	3"	1-1/8"	100	42.7	9,000
75S350CBH0P	3/4"	3-1/2"	1-1/8"	100	47.8	9,000
75S400CBH0P	3/4"	4"	1-1/8"	100	52.5	9,000
75S500CBH0P	3/4"	5"	1-1/8"	75	62.5	9,000
75S600CBH0P	3/4"	6"	1-1/8"	75	72.4	9,000
62S200CBH0P	5/8"	2"	1"	100	21.8	7,500
62S400CBH0P	5/8"	4"	1"	100	35.4	7,500

SWL provides a safety factor of approximately 2 to 1.

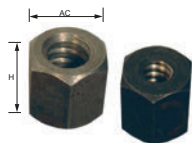
## Long Coil Bolts



OCM Part No.	D Size	L Length	AC Across Flats	Safe Working Load lbs
50A1200CBH0P	1/2"	12"	7/8"	9,000
50A1600CBH0P	1/2"	16"	7/8"	9,000
50A1800CBH0P	1/2"	18"	7/8"	9,000
50A2400CBH0P	1/2"	24"	7/8"	9,000
50A3000CBH0P	1/2"	30"	7/8"	9,000

-SWL provides a safety factor of approximately 2 to 1.  
-Includes 1 Running Nut per bolt

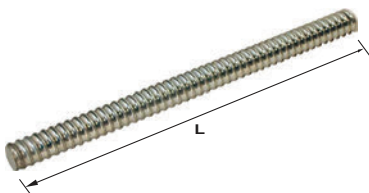
## Heavy Duty "Tall" Coil Nuts



OCM Part No.	D Size	H Height	AC Across Flats	Carton Qty	Weight per 100pcs lbs	Safe Working Load lbs
50ACCN0PT	1/2"	1-1/8"	1-5/16"	1,000	6.2	9,000
75SCCN0PT	3/4"	1-1/8"	1-5/16"	500	11.4	18,000
100SSCCN0PTL	1"	2"	1-3/8"	500	11.4	37,500

SWL provides a safety factor of approximately 2 to 1.

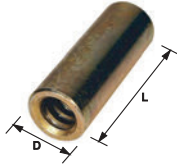
## Coil Rod



OCMPart No.	D size	L length	Weight per pcs lbs	Safe Working Load
50ACTRP144	1/2"	12FT	6.4	9,000
62ACTRP144	5/8"	12FT	8.5	12,000
75ACTRP144	3/4"	12FT	13.4	18,000
87ACTRP144	7/8"	12FT	20.04	31,000
100ACTRP144	1"	12FT	24.48	38,000
125ACTRP144	1-1/4"	12FT	41.76	56,000
150ACTRP144	1-1/2"	12FT	72.12	68,000
50ACTRP72	1/2"	6FT	3.2	9,000
75ACTRP72	3/4"	6FT	7.7	18,000
100ACTRP72	1"	6FT	12.24	38,000
125ACTRP72	1-1/4"	6FT	20.8	56,000

-SWL provides a safety factor of approximately 2 to 1.  
-Special Order cut lengths are available by request

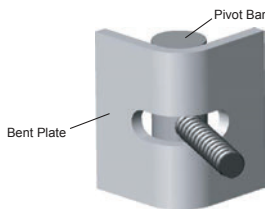
## Coil Rod Stop Coupler



D Thread	L Length	OCM Part No.	Safe Working Load lbs
1/2"	2-1/2"	50A250CTCP	9,000
3/4"	3"	75S300CTCP	18,000
1"	4-1/2"	100S450CTCP	38,000
1-1/4"	5-1/2"	125S550CTCP	56,000
1-1/2"	7"	150S700CTCP	67,500

SWL provides a safety factor of approximately 2 to 1.

## Weld Angle Bracket



	OCM Part No.	D Size	Weight per each lbs	Safe Working Load lbs
Pivot Bar	50APBP	1/2"	2.15	9,000
	75SPBP	3/4"	2.10	18,000
	100SPBP	1"	4.85	31,500
Bent Plate	AWB24-1	1/2"	1.90	9,000
	AWB24-1	3/4"	1.90	18,000
	AWB24-2	1"	5.85	31,500

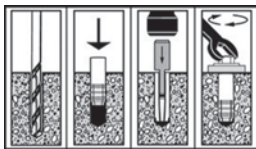
## Coil Wing Nut



OCM Part No.	D Size	Weight per pcs lbs	Safe Working Load lbs
CWN50	1/2"	0.65	9,000
CWN62	5/8"	0.90	12,000
CWN75	3/4"	0.90	18,000
CWN87	7/8"	1.07	31,000
CWN100	1"	1.07	38,000
CWN125	1-1/4"	1.22	56,000
CWN150	1-1/2"	2.85	68,000

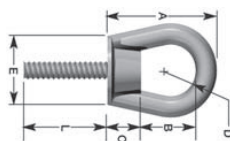
-SWL provides a safety factor of approximately 2 to 1.

## Coil Thread Drop In Anchors



OCM Part No.	Thread Size	Wt. lbs.	Box Qty.
50CDIA	1/2"	0.12	50
50CDIA-TOOL	1/2"	0.4	1
75CDIA	3/4"	0.5	25
75CDIA-TOOL	3/4"	0.4	1

## Coil Eye Bolt



OCM Part No.	Bolt Diameter in.	Safe Working Load	A in.	B in.	C in.	D in.	E in.
50CEB	1/2	2,700	3 1/4	1 5/8	1	3/4	2
75CEB	3/4	3,600	3 1/2	1 3/4	1	3/4	2
100CEB	1	7,200	5	2 3/4	1 1/4	1	3

SWL provides a safety factor of approximately 5 to 1.

## Coil Eye Nut



OCM Part No.	D Size	H Height	Weight per pcs lbs	Safe Working Load lbs
50CEN	1/2"	3-1/4"	0.7	2,700
75CEN	3/4"	3-1/2"	1.2	3,600
100CEN	1"	5"	2.9	7,200
125CEN	1-1/4"	6-1/4"	6.0	10,800

SWL provides a safety factor of approximately 2 to 1.

\*Coil Eye Bolts available upon request.

## Batter Washers



Thread Size	OCM Part No.	Wt. lbs.	Box Qty.
1/2"	50BW	1.45	25
3/4"	75BW	1.88	20
1"	100BW	3.35	10
1 1/4"	125BW	5.51	Bulk
1 1/2"	150BW	7.29	Bulk

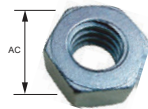
## Fitting Up "Speed" Bolts



OCM Part No.	D Size	L Length	AC Across Flats	Carton Qty	Weight per pc lbs	Grade
75F200FUBP	3/4"	2"	1.25"	125	0.37	ASTM A325
75F300FUBP	3/4"	3"	1.25"	85	0.50	ASTM A325
75F400FUBP	3/4"	4"	1.25"	85	0.62	ASTM A325

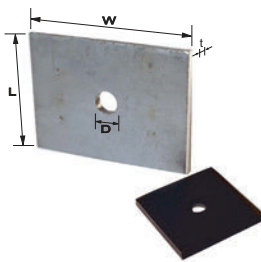
\*75F200FUBP(2"length)is full threaded.

## Fitting Up "Speed" Nuts



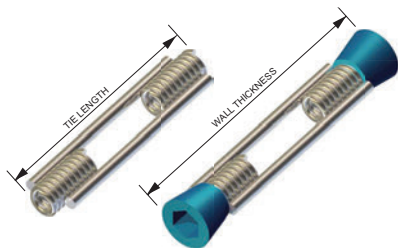
OCM Part No.	D Size	AC Across Flats	Carton Qty	Weight per Carton lbs	Grade
75FNHH6P	3/4"	1.25"	250	43	ASTM A563 Grade C
75FNHH2HP	3/4"	1.25"	250	45	ASTM A194 Grade 2H

## Flat Washer



OCM Part No.	D SIZE	L X W X t	Wt. lbs.	Box Qty.	Safe Working Load lbs
50RC3475FWAP	1/2"	3" X 4" X 1/4"	0.900	50	6,750
50RC4525FWAP	1/2"	4" X 5" X 1/4"	0.900	50	8,750
75RC3475FWAP	3/4"	3" X 4" X 1/4"	1.000	50	6,750
75RC4575FWAP	3/4"	4" X 5" X 1/4"	1.440	50	8,750
75RC4538FWAP	3/4"	4" X 5" X 3/8"	2.850	25	14,000
100RC55716FWAP	1"	5" X 5" X 7/16"	3.300	25	18,000
125RC5558FWAP	1 1/4"	5" X 5" X 5/8"	3.300	15	27,000
150RC7555FWAP	1 1/2"	5" X 5" X 3/4"	5.500	10	27,000
150RC5787FWAP	1 1/2"	5" X 7" X 7/8"	8.000	10	68,000

## 1/2" Coil Tie - Standard - Conefast



OCM Part No.	Wall Thickness	Tie Length	Box Qty	Weight / pcs lbs	Safe Working Load lbs
CT5004SP	6	4	100	0.320	4,500 lbs.
CT5006SP	8	6	100	0.320	4,500 lbs.
CT5008SP	10	8	100	0.320	4,500 lbs.
CT5010SP	12	10	100	0.360	4,500 lbs.
CT5012SP	14	12	100	0.420	4,500 lbs.
CT5014SP	16	14	100	0.466	4,500 lbs.
CT5016SP	18	16	100	0.512	4,500 lbs.
CT5018SP	20	18	100	0.558	4,500 lbs.
CT5020SP	22	20	100	0.604	4,500 lbs.
CT5022SP	24	22	100	0.650	4,500 lbs.
CT5024SP	26	24	100	0.696	4,500 lbs.
CT5026SP	28	26	100	0.742	4,500 lbs.
CT5028SP	30	28	100	0.788	4,500 lbs.
CT5030SP	32	30	100	0.834	4,500 lbs.
CT5032SP	34	32	100	0.880	4,500 lbs.
CT5034SP	36	34	100	0.926	4,500 lbs.
CT5036SP	38	36	100	1.000	4,500 lbs.
CT5042SP	44	42	100	1.100	4,500 lbs.

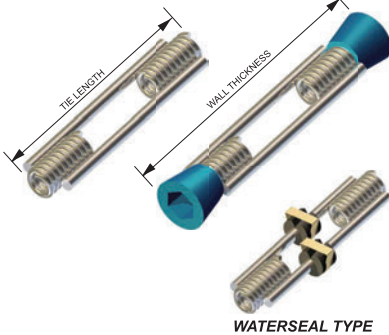
\*\*Additional lengths available upon request

\*\*Waterseal available upon request

-SWL provides a safety factor of approximately 2 to 1.



## 3/4" Coil Tie - Standard - Conefast



OCM Part No.	Wall Thickness	Tie Length	Box Qty	Weight / pcs lbs	Safe Working Load lbs
CT7506SP	8	6	100	0.750	6,750 lbs.
CT7508SP	10	8	100	0.750	6,750 lbs.
CT7510SP	12	10	100	0.900	6,750 lbs.
CT7512SP	14	12	100	0.980	6,750 lbs.
CT7514SP	16	14	100	0.980	6,750 lbs.
CT7516SP	18	16	100	1.140	6,750 lbs.
CT7518SP	20	18	100	1.140	6,750 lbs.
CT7520SP	22	20	100	1.320	6,750 lbs.
CT7522SP	24	22	100	1.390	6,750 lbs.
CT7524SP	26	24	100	1.480	6,750 lbs.

\*\*Additional lengths available upon request  
 \*\*Waterseal available upon request  
 -SWL provides a safety factor of approximately 2 to 1.

## Conefast Plastic Cone



OCM Part No.	Dia.	Setback	Qty per Box
SBCONE50X100P	1/2"	1"	25
SBCONE50X150P	1/2"	1 1/2"	25
SBCONE50X200P	1/2"	2"	25
SBCONE75X100P	3/4"	1"	25
SBCONE75X200P	3/4"	2"	25
SBCONE100X200P	1"	2"	25
SBCONE125X200P	1 1/4"	2"	25

## Cone Wrench



CT50WRENCH	1/2" Cone Wrench
CT75WRENCH	3/4" Cone Wrench

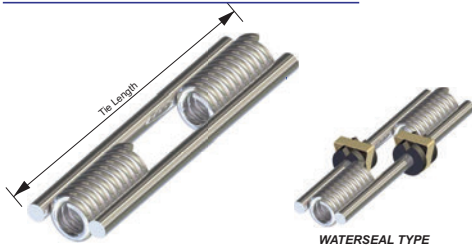
## 1/2" Coil Tie - Standard - Full Strut



OCM Part No.	Tie Length	Box Qty	Weight / pcs lbs	Safe Working Load lbs
CT5004SP-F	4	100	0.320	4,500 lbs.
CT5006SP-F	6	100	0.320	4,500 lbs.
CT5008SP-F	8	100	0.320	4,500 lbs.
CT5010SP-F	10	100	0.360	4,500 lbs.
CT5012SP-F	12	100	0.420	4,500 lbs.
CT5014SP-F	14	100	0.466	4,500 lbs.
CT5016SP-F	16	100	0.512	4,500 lbs.
CT5018SP-F	18	100	0.558	4,500 lbs.
CT5020SP-F	20	100	0.604	4,500 lbs.
CT5024SP-F	24	100	0.696	4,500 lbs.
CT5030SP-F	30	100	0.834	4,500 lbs.
CT5036SP-F	36	100	1.000	4,500 lbs.
CT5042SP-F	42	100	1.100	4,500 lbs.

\*\*1/2" Heavy Duty (6,750 SWL) available upon request - 4 Strut Available  
 \*\*Additional lengths available upon request  
 \*\*Waterseal available upon request  
 -SWL provides a safety factor of approximately 2 to 1.

## 3/4" Coil Tie - Standard - Full Strut



OCM Part No.	Tie Length	Box Qty	Weight / pcs lbs	Safe Working Load lbs
CT7506SP-F	6	100	0.750	6,750 lbs.
CT7508SP-F	8	100	0.750	6,750 lbs.
CT7510SP-F	10	100	0.980	6,750 lbs.
CT7512SP-F	12	100	0.980	6,750 lbs.
CT7514SP-F	14	100	1.070	6,750 lbs.
CT7516SP-F	16	100	1.140	6,750 lbs.
CT7518SP-F	18	100	1.230	6,750 lbs.
CT7520SP-F	20	100	1.320	6,750 lbs.
CT7524SP-F	24	100	1.480	6,750 lbs.

\*\*Additional lengths available upon request  
 \*\*Waterseal available upon request  
 -SWL provides a safety factor of approximately 2 to 1.

## Combo Tie



	OCM Part No.	Wall Size	Weight per pcs lbs	Carton Qty	Safe Working Load lbf
HD Loop Tie and 1/2" Coil Tie	COMBO-50C/HDL-4	4	0.25	100	3,000
	COMBO-50C/HDL-6	6	0.27	100	3,000
	COMBO-50C/HDL-8	8	0.29	100	3,000
Snap Tie and 1/2" Coil Tie	COMBO-50C/LEST	6	0.30	100	2,250

SWL provides a safety factor of approximately 2 to 1.

## Coil Loop Inserts

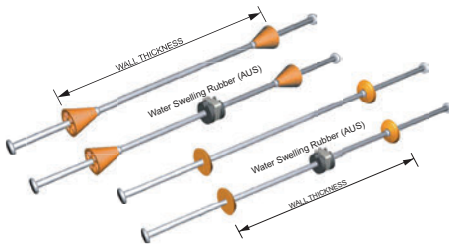


OCM Part No.	Dia.	Length	Safe Working Load lbs.
SCLI50X3P(G)	1/2"	3"	2,250
SCLI50X4P(G)	1/2"	4"	2,250
SCLI50X6P(G)	1/2"	6"	3,750
SCLI75X4P(G)	3/4"	4"	2,250
SCLI75X6P(G)	3/4"	6"	3,750
SCLI75X9P(G)	3/4"	9"	3,750
SCLI100X6P(G)	1"	6"	3,750
SCLI100X8P(G)	1"	8"	3,750

SWL provides a safety factor of approximately 4 to 1.

-Plain or galvanized available.

## Snap Tie



	Part No. Short End 4-3/4"	Part No. Long End 8-1/4"	Wall Size (in)	Carton Qty	Safe Working Load (lbs)
<b>Cone</b>	STSEC-6	STLEC-6	6	100	2,250
	STSEC-7	STLEC-7	7	100	2,250
	STSEC-7.58	STLEC-7.58	7-5/8	100	2,250
	STSEC-8	STLEC-8	8	100	2,250
	STSEC-9	STLEC-9	9	100	2,250
	STSEC-10	STLEC-10	10	100	2,250
	STSEC-11	STLEC-11	11	100	2,250
	STSEC-11.58	STLEC-11.58	11-5/8	100	2,250
	STSEC-12	STLEC-12	12	100	2,250
	STSEC-14	STLEC-14	14	100	2,250
	STSEC-15	STLEC-15	15	100	2,250
	STSEC-16	STLEC-16	16	100	2,250
	STSEC-18	STLEC-18	18	100	2,250
	STSEC-20	STLEC-20	20	100	2,250
	STSEC-24	STLEC-24	24	100	2,250
	STSEC-27	STLEC-27	27	100	2,250
	STSEC-30	STLEC-30	30	100	2,250
	STSEC-32	STLEC-32	32	100	2,250
	STSEC-33	STLEC-33	33	100	2,250
	STSEC-36	STLEC-36	36	100	2,250
STSEC-39	STLEC-39	39	100	2,250	
STSEC-42	STLEC-42	42	100	2,250	
STSEC-48	STLEC-48	48	100	2,250	
STSEC-54	STLEC-54	54	100	2,250	
STSEC-60	STLEC-60	60	100	2,250	
<b>Washer</b>	STSEW-6	STLEW-6	6	100	2,250
	STSEW-7	STLEW-7	7	100	2,250
	STSEW-8	STLEW-8	8	100	2,250
	STSEW-9	STLEW-9	9	100	2,250
	STSEW-10	STLEW-10	10	100	2,250
	STSEW-12	STLEW-12	12	100	2,250
	STSEW-14	STLEW-14	14	100	2,250
	STSEW-15	STLEW-15	15	100	2,250
	STSEW-16	STLEW-16	16	100	2,250
	STSEW-18	STLEW-18	18	100	2,250
	STSEW-20	STLEW-20	20	100	2,250
	STSEW-24	STLEW-24	24	100	2,250
	STSEW-30	STLEW-30	30	100	2,250
	STSEW-36	STLEW-36	36	100	2,250
STSEW-42	STLEW-42	42	100	2,250	
STSEW-48	STLEW-48	48	100	2,250	
STSEW-54	STLEW-54	54	100	2,250	
STSEW-60	STLEW-60	60	100	2,250	

-SWL provides a safety factor of approximately 2 to 1.

-Special lengths and Stainless Steel also available.

## Cring(25-UCR)

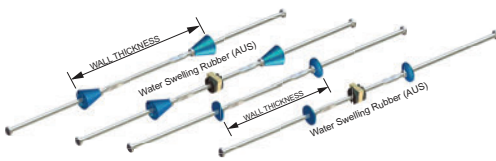
for Snap Ties



Part No.	For Use With	Box Quantity
25-UCR	Snap Ties, Standard Loop Ties	100 pcs

-SWL provides a safety factor of approximately 2 to 1.  
 -Special lengths and Stainless Steel also available.

## Snap Tie Heavy Duty



	Part No. Short End 4-3/4"	Part No. Long End 8-1/4"	Wall Size (in)	Carton Qty	Safe Working Load (lbs)
Cone	STSEC-6 HD	STLEC-6 HD	6	100	3,250
	STSEC-7 HD	STLEC-7 HD	7	100	
	STSEC-7.58 HD	STLEC-7.58 HD	7-5/8	100	
	STSEC-8 HD	STLEC-8 HD	8	100	
	STSEC-9 HD	STLEC-9 HD	9	100	
	STSEC-10 HD	STLEC-10 HD	10	100	
	STSEC-11 HD		11	100	
	STSEC-11.58 HD	STLEC-11.58 HD	11-5/8	100	
	STSEC-12 HD	STLEC-12 HD	12	100	
	STSEC-14 HD	STLEC-14 HD	14	100	
	STSEC-15 HD	STLEC-15 HD	15	100	
	STSEC-16 HD	STLEC-16 HD	16	100	
	STSEC-18 HD	STLEC-18 HD	18	100	
	STSEC-20 HD	STLEC-20 HD	20	100	
	STSEC-24 HD	STLEC-24 HD	24	100	
	STSEC-30 HD	STLEC-30 HD	30	100	
	STSEC-36 HD	STLEC-36 HD	36	100	
STSEC-42 HD	STLEC-42 HD	42	100		
STSEC-48 HD	STLEC-48 HD	48	100		
Washer	STSEW-6 HD	STLEW-6 HD	6	100	3,250
	STSEW-8 HD	STLEW-8 HD	8	100	
	STSEW-9 HD	STLEW-9 HD	9	100	
	STSEW-10 HD	STLEW-10 HD	10	100	
	STSEW-12 HD	STLEW-12 HD	12	100	
	STSEW-14 HD	STLEW-14 HD	14	100	
	STSEW-15 HD	STLEW-15 HD	15	100	
	STSEW-16 HD	STLEW-16 HD	16	100	
	STSEW-18 HD	STLEW-18 HD	18	100	
	STSEW-20 HD	STLEW-20 HD	20	100	
	STSEW-24 HD	STLEW-24 HD	24	100	
	STSEW-30 HD	STLEW-30 HD	30	100	
STSEW-36 HD	STLEW-36 HD	36	100		
STSEW-42 HD	STLEW-42 HD	42	100		
STSEW-48 HD	STLEW-48 HD	48	100		

-SWL provides a safety factor of approximately 2 to 1.  
 -Special lengths and Stainless Steel also available.

## Snap Tie Wedge

Galvanized



OCM Part No.	Carton Qty	Weight per pcs lbs	Safe Working Load lbs
STWEGP	100	0.40	3,325

## A Clamp



OCM Part No.	Carton Qty	Weight per pcs lbs
ACLMP	25	1.40

**C-Clamp**



OCM Part No.	Carton Qty	Weight per pcs lbs
CCLMP	25	1.1

**Snap Tie Extender**



OCM Part No.	Carton Qty
ST-STE	50

**Snap Bracket**



OCM Part No.	Box Qty	Weight per pcs lbs	Finish
OCM-SB	25	1.2	Plated

**Form Liner Clamp**



OCM Part No.	Box Qty	Weight per pcs lbs	Finish
OCM-FLB	25	1.3	Galvanized

**Jahn Scaffolding Bracket**



OCM Part No.	Weight per pcs lbs
SBRACT-JH	16.5

**A-90 Scaffold Bracket Jack**



OCM Part No.	Weight per pcs lbs
SBRACT-A90	24.5

**Double Waler Bracket**



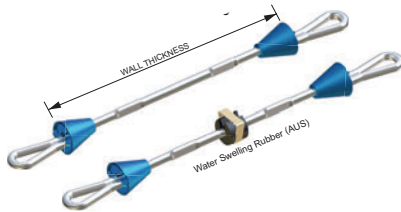
OCM Part No.	Size	Carton Qty	Weight per pcs lbs
WB2X4	2 x 4	25	0.91
WB2X6	2 x 6	25	1

**Snap Tie**  
**Corner**  
**Lock**



OCM Part No.	Weight per pcs lbs
OCM-JCL	1.78

**Speed Lock Tie**  
1"x1" Self Centering Cone



OCM Part No.	Wall Size	Weight Per Each lbs	Safe Working Load lbs
SLT-06B	6"	0.21	2,250
SLT-07B	7"	0.22	2,250
SLT-08B	8"	0.23	2,250
SLT-09B	9"	0.24	2,250
SLT-10B	10"	0.25	2,250
SLT-12B	12"	0.28	2,250
SLT-14B	14"	0.31	2,250
SLT-16B	16"	0.34	2,250
SLT-18B	18"	0.36	2,250
SLT-20B	20"	0.38	2,250
SLT-22B	22"	0.41	2,250
SLT-24B	24"	0.44	2,250
SLT-30B	30"	0.48	2,250
SLT-36B	36"	0.53	2,250
SLT-42B	42"	0.62	2,250
SLT-48B	48"	0.71	2,250

-SWL provides a safety factory of approximately 2 to 1.  
-Special lengths and Stainless Steel also available.

**Speed Lock**  
**Stiff**  
**Back**



OCM Part No.	Carton Qty	Weight per pcs lbs
SLB-SB	25	0.50

**Speed Lock**  
**Bracket**



OCM Part No.	Carton Qty	Weight per pcs lbs	Safe Working Load lbs
SLB	25	1.73	2,250



**HANDSET CONCRETE FORMING SYSTEMS**

**-Steel/Ply Wood Panels and Fillers**



**-Metal Fillers and Filler Angles**



**-Inside Corners, Outside Corners, Hinged Corners**



**-Form Ties, Wedge Bolts, Scaffold Brackets, Handset Accessories**



[www.ocm-inc.com](http://www.ocm-inc.com)

## OCM Steel/Plywood Panels and Fillers



- Complete line of panel heights, filler widths, and all types of corners available to make ordering and maintaining your current fleet easier.
- High quality powder coating increases durability, weatherability, and keeps forms looking good for years to come.
- Comes standard with upgraded Fin Form solid Birch with 120/120 performance that provides uncommon strength with a smooth surface. It is easy to strip and will not leave grain imprinting. Fin Form is bonded with a phenolic resin adhesive which is water and boil proof. All edges are factory sawn and sealed with a special styrene acrylic sealer. Classic HDO with 100/30 is also available upon request and is the standard insert offered by our competition.
- Side rails and cross members are made from high strength rolled steel that meets or exceeds the industry standard for Handset Forms of 55,000 psi minimum yield strength for the side rails and 60,000 psi minimum yield strength for cross members.
- Cross members are standard 2" x 2" and are located every 12" making them ideal for residential /commercial foundations and rental yards.
- Rivets are 1/4" heavy duty, solid machine installed made from 1100F aluminum to increase longevity.
- Welds are quality controlled by highly trained craftsmen, and frames are manufactured to precise dimensions so they are easily compatible with other Handset Steel/Plywood form systems.
- Dado slots located at 12" on center and wedge bolt accessory slots are located at 6" on center.
- Conveniently located handles make set up, stripping and handling easier.
- Maximum pour pressure of 1,000 lbs per square foot.
- With proper care contractors can expect that forms will be able to be reused up to 200 times before plywood needs to be replaced.

Sizes	8FT		6FT		5FT		4FT		3FT	
	OCM Part No.	Weight lbs	OCM Part No.	Weight lbs	OCM Part No.	Weight lbs	OCM Part No.	Weight lbs	OCM Part No.	Weight lbs
24" Panels	SF96X24	75	SF72X24	58	SF60X24	48	SF48X24	40	SF36X24	30
22" Fillers	SF96X22	70	SF72X22	54	SF60X22	46	SF48X22	38	SF36X22	29
20" Fillers	SF96X20	66	SF72X20	50	SF60X20	42	SF48X20	35	SF36X20	27
18" Fillers	SF96X18	63	SF72X18	47	SF60X18	39	SF48X18	32	SF36X18	25
16" Fillers	SF96X16	59	SF72X16	44	SF60X16	37	SF48X16	30	SF36X16	24
14" Fillers	SF96X14	54	SF72X14	40	SF60X14	35	SF48X14	28	SF36X14	22
12" Fillers	SF96X12	50	SF72X12	36	SF60X12	33	SF48X12	26	SF36X12	20
10" Fillers	SF96X10	46	SF72X10	34	SF60X10	30	SF48X10	24	SF36X10	19
8" Fillers	SF96X8	42	SF72X8	32	SF60X8	26	SF48X8	22	SF36X8	17
6" Fillers	SF96X6	39	SF72X6	28	SF60X6	25	SF48X6	19	SF36X6	15
5" Fillers	SF96X5	37	SF72X5	27	SF60X5	23	SF48X5	18	SF36X5	14
4" Fillers	SF96X4	34	SF72X4	25	SF60X4	21	SF48X4	17	SF36X4	13

*\*9FT and 10FT available with HDO plywood upon request.*

## OCM Inside Corners



Description	8FT		6FT		5FT		4FT		3FT	
	OCM Part No.	Weight lbs	OCM Part No.	Weight lbs	OCM Part No.	Weight lbs	OCM Part No.	Weight lbs	OCM Part No.	Weight lbs
4x4 Inside Corners	IC44-8F	42	IC44-6F	32	IC44-5F	28	IC44-4F	23	IC44-3F	18
6x6 Inside Corners	IC66-8F	52	IC66-6F	40	IC66-5F	32	IC66-4F	26	IC66-3F	20

- Standard 4x4 or 6x6 Inside Corners are manufactured with reinforcing straps to maintain 90°.
- Dados and slots are placed every 12" O.C. for tie and connection hardware.
- Used to form 90° angle.
- 9FT. available upon request.



Description	8FT		6FT		5FT		4FT		3FT	
	OCM Part No.	Weight lbs	OCM Part No.	Weight lbs	OCM Part No.	Weight lbs	OCM Part No.	Weight lbs	OCM Part No.	Weight lbs
Inside 6x6 Hinge Corner	IC66-8H	66	IC66-6H	49	IC66-5H	41	IC66-4H	34	IC66-3H	25

- Inside Hinged Corners are used to form inside corners down to a 45° angle.
- Typically used opposite of outside hinged corners.
- 9FT. available upon request.

Description	8FT		6FT		5FT		4FT		3FT	
	OCM Part No.	Weight lbs	OCM Part No.	Weight lbs	OCM Part No.	Weight lbs	OCM Part No.	Weight lbs	OCM Part No.	Weight lbs
Inside Bay Corner	BCI96	34	BCI72	25	BCI60	20	BCI48	17	BCI36	13

- Inside Bay Corners have a 3"x3" face dimension.
- Typically used opposite of an Outside Bay Corner to form a 135° angle.
- 9FT. available upon request.

## OCM Outside Corners



Description	8FT		6FT		5FT		4FT		3FT	
	OCM Part No.	Weight lbs	OCM Part No.	Weight lbs	OCM Part No.	Weight lbs	OCM Part No.	Weight lbs	OCM Part No.	Weight lbs
Standard Outside Corners	OC96F	25	OC72F	18	OC60F	14	OC48F	12	OC36F	9

- Used to form 90° angle.
- Dados and slots are placed every 12" O.C. for tie and connection hardware.
- 9FT. available upon request.



Description	8FT		6FT		5FT		4FT		3FT	
	OCM Part No.	Weight lbs	OCM Part No.	Weight lbs	OCM Part No.	Weight lbs	OCM Part No.	Weight lbs	OCM Part No.	Weight lbs
Outside Hinge Corner	OC96H	20	OC72H	18	OC60H	16	OC48H	12	OC36H	8

- Used to form Outside Corners from 135° down to 5° angle.
- Typically used opposite of Inside Hinged Corners.
- 9FT. available upon request.

Description	8FT		6FT		5FT		4FT		3FT	
	OCM Part No.	Weight lbs	OCM Part No.	Weight lbs	OCM Part No.	Weight lbs	OCM Part No.	Weight lbs	OCM Part No.	Weight lbs
Outside Bay Corner	BCO96	60	BCO72	46	BCO60	36	BCO48	30	BCO36	23

- Outside Bay Corners have a 7"x7" face dimension.
- Typically used opposite of Inside Bay Corners to form a 135° angle.
- 9FT. available upon request.



## OCM Metal Fillers



Description	8FT		6FT		5FT		4FT		3FT	
	OCM Part No.	Weight lbs	OCM Part No.	Weight lbs	OCM Part No.	Weight lbs	OCM Part No.	Weight lbs	OCM Part No.	Weight lbs
2" Metal Filler	MF96X200	23	MF72X200	17	MF60X200	15	MF48X200	11	MF36X200	9
1-1/2" Metal Filler	MF96X150	21	MF72X150	15	MF60X150	13	MF48X150	10	MF36X150	8
1" Metal Filler	MF96X100	18	MF72X100	13	MF60X100	11	MF48X100	9	MF36X100	7

**-Metal Fillers are compatible with other handset steel/plywood forming systems.**

**-Metal Fillers are made from cold formed u-shape sections and are available in 1", 1-1/2" and 2" width.**

**-9FT. available upon request.**

## OCM Filler Angles



Description	8FT		6FT		5FT		4FT		3FT	
	OCM Part No.	Weight lbs	OCM Part No.	Weight lbs	OCM Part No.	Weight lbs	OCM Part No.	Weight lbs	OCM Part No.	Weight lbs
Filler Angle	FA96	11	FA72	8	FA60	7	FA48	5	FA36	4

**-OCM Filler Angles are useful when forming around rebar, pipes or if there are other protrusions from the face of the wall.**

**-Also used for changes in footing elevations while forming.**

**-9FT. available upon request.**

## X-Flat Tie



OCM Part No.	Wall Size	Weight Per Each lbs	Safe Working Load lbs
FT04SP	4"	0.160	3,000 lbs
FT06SP	6"	0.275	3,000 lbs
FT08SP	8"	0.320	3,000 lbs
FT09SP	9"	0.345	3,000 lbs
FT10SP	10"	0.365	3,000 lbs
FT11SP	11"	0.380	3,000 lbs
FT12SP	12"	0.410	3,000 lbs
FT13SP	13"	0.430	3,000 lbs
FT14SP	14"	0.450	3,000 lbs
FT15SP	15"	0.480	3,000 lbs
FT16SP	16"	0.500	3,000 lbs
FT17SP	17"	0.530	3,000 lbs
FT18SP	18"	0.550	3,000 lbs
FT19SP	19"	0.580	3,000 lbs
FT20SP	20"	0.600	3,000 lbs
FT21SP	21"	0.630	3,000 lbs
FT22SP	22"	0.650	3,000 lbs
FT23SP	23"	0.670	3,000 lbs
FT24SP	24"	0.690	3,000 lbs
FT26SP	26"	0.730	3,000 lbs
FT28SP	28"	0.790	3,000 lbs
FT30SP	30"	0.860	3,000 lbs
FT32SP	32"	0.910	3,000 lbs
FT34SP	34"	0.960	3,000 lbs
FT36SP	36"	1.010	3,000 lbs
FT38SP	38"	1.060	3,000 lbs
FT40SP	40"	1.100	3,000 lbs
FT42SP	42"	1.160	3,000 lbs
FT44SP	44"	1.240	3,000 lbs
FT46SP	46"	1.300	3,000 lbs
FT48SP	48"	1.340	3,000 lbs
FT54SP	54"	1.520	3,000 lbs
FT60SP	60"	1.700	3,000 lbs
FT66SP	66"	1.880	3,000 lbs
FT72SP	72"	2.060	3,000 lbs
FT78SP	78"	2.250	3,000 lbs
FT84SP	84"	2.450	3,000 lbs

SWL provides a safety factor of approximately 2 to 1.

## X-Flat Tie - Heavy Duty



OCM Part No.	Wall Size	Weight Per Each lbs	Safe Working Load lbs
FT06HD	6"	0.284	3,500
FT08HD	8"	0.330	3,500
FT10HD	10"	0.376	3,500
FT12HD	12"	0.423	3,500
FT14HD	14"	0.443	3,500
FT16HD	16"	0.515	3,500
FT18HD	18"	0.567	3,500

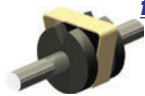
## Heavy Duty Loop Panel Tie



	OCM Part No.	Wall Size	Weight per pcs lbs	Carton Qty	Safe Working Load lbf
Heavy 2-1/8" Ends	LTHD-06	6"	0.21	100	3,000
	LTHD-07	7"	0.22	100	3,000
	LTHD-08	8"	0.23	100	3,000
	LTHD-09	9"	0.24	100	3,000
	LTHD-10	10"	0.25	100	3,000
	LTHD-12	12"	0.28	100	3,000
	LTHD-14	14"	0.31	100	3,000
	LTHD-15	15"	0.32	100	3,000
	LTHD-16	16"	0.34	100	3,000
	LTHD-18	18"	0.36	100	3,000
	LTHD-19	19"	0.38	100	3,000
	LTHD-20	20"	0.39	100	3,000
	LTHD-24	24"	0.44	100	3,000
	LTHD-26	26"	0.46	100	3,000
	LTHD-28	28"	0.48	100	3,000
	LTHD-30	30"	0.49	100	3,000
	LTHD-32	32"	0.54	100	3,000
	LTHD-34	34"	0.56	100	3,000
	LTHD-36	36"	0.58	100	3,000
	LTHD-40	40"	0.65	100	3,000
	LTHD-42	42"	0.68	100	3,000
LTHD-48	48"	0.78	100	3,000	
LTHD-54	54"	0.88	100	3,000	
LTHD-60	60"	0.98	100	3,000	

SWL provides a safety factor of approximately 2 to 1.  
 -Additional lengths and specials available upon request.  
 -Waterstop and Cones are available upon request.

## Cring(25-UCR-H) for HD Loop Ties



Part No.	For Use With	Box Quantity
25-UCR-H	Heavy Duty Loop Ties, Heavy Duty Snap Ties, Self Centering Loop Ties	100 pcs

SWL provides a safety factor of approximately 2 to 1.

## Heavy Duty Loop Panel Tie with Waterseal



OCM Part No.	Wall Size	Weight Per Each lbs	Safe Working Load lbs
LTHD-08WS	8"	0.24	3,000
LTHD-10WS	10"	0.25	3,000
LTHD12-WS	12"	0.29	3,000
LTHD14-WS	14"	0.31	3,000
LTHD16-WS	16"	0.35	3,000

## Base Tie



OCM Part No.	Wall Thickness Size	Type	Safe Working Load lbs.
BT-06	6"	Standard	3,000
BT-08	8"	Standard	3,000
BT-10	10"	Standard	3,000
BT-12	12"	Standard	3,000
BT-14	14"	Standard	3,000
BT-16	16"	Standard	3,000
BT-18	18"	Standard	3,000
BT-24	24"	Standard	3,000

SWL provides a safety factor of approximately 2 to 1.

## Wedge Bolt



OCM Part No.	Bucket Qty	Weight per Bucket lbs
OCMWEGP	500	60

## Long Wedge Bolt



OCM Part No.	Bucket Qty	Weight per Bucket lbs
OCMLWEGP	250	35

## Short Wedge Bolt



OCM Part No.	Bucket Qty	Weight per Bucket lbs
OCMSWBP	250	25

## Gang Wedge Bolt



OCM Part No.	Bucket Qty	Weight per Bucket lbs
OCMGWBP	200	60

## Turnbuckle



OCM Part No.	Type	Weight per pcs lbs	Carton Qty
TBFB-FSF	Straight Plate	7.8	250
TBFB-BF	Bent Plate	8.1	250

## Turnbuckles - Heavy Duty



OCM Part No.	Type	Wt. lbs.	Carton
TBFB-FSF-HD	Flat Straight Plate	11.000	250 Pieces
TBFB-BF-HD	Bent Plate	11.000	250 Pieces

## Hand-Set Scaffolding Bracket



OCM Part No.	Weight per pcs lbs
SBRACK-HSET	13.9

## One Piece Waler Clamp



OCM Part No.	Carton Qty	Weight per pcs lbs
OCM-OPWC	25	1.15

## One Piece Waler Clamp - Heavy Duty



OCM Part No.	Carton Qty	Weight per pcs lbs
OCM-OPWC-HD	25	1.30

## Z Tie Holder



OCM Part No.	Carton Qty	Weight per pcs lbs
ZTIE	25	0.74

## J-Strongback Hook



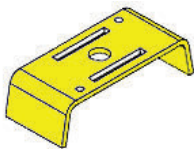
OCM Part No.	Size	Qty per Box
JSBH-2424	2 X 4 - 2 X 4	25
JSBH-2624	2 X 6 - 2 X 4	25
JSBH-2626	2 X 6 - 2 X 6	25

## Ply-Lag



OCM Part No.	Size D	Length L	Overall Length in	Safe Working Load lbs
PL50-5.75	1/2"	3"	5 3/4"	3,000
PL50-6.25	1/2"	3 1/2"	6 1/4"	3,000
PL50-6.75	1/2"	4"	6 3/4"	3,000
PL50-7.25	1/2"	4 1/2"	7 1/4"	3,000
PL50-8.75	1/2"	6"	8 3/4"	3,000
PL50-9.75	1/2"	7"	9 3/4"	3,000
PL50-10.75	1/2"	8"	10 3/4"	3,000
PL50-12.75	1/2"	10"	12 3/4"	3,000
PL50-14.75	1/2"	12"	14 3/4"	3,000

## Gang Waler Plate



OCM Part No.	Carton Qty
OCMGWP	50

## S-Wedge



OCM Part No.	Carton Qty
OCM-SWEDGE	100

## Waler Tie



OCM Part No.	Carton Qty
WT-2X4	100
WT-2X6	100

## Strongback Tie



OCM Part No.	Carton Qty
SBT2X4-2X4	100
SBT2X6-2X4	100
SBT2X6-2X6	100

## Pipe Braces - Adjustable



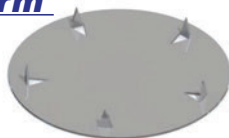
Description	OCM Part No.	Wt. lbs.	SWL MAX w/o Knee Bracing
Adjustable Pipe Brace - Standard Brace Length 7'-6"(Min.) To 14'-0"(Max)	PB-01	95.000	6,500/2,000
Adjustable Pipe Brace - Heavy Duty Brace Length 14'-0"(Min.) To 23'-6"(Max)	PB-04	130.000	6,500/1,950
Adjustable Pipe Brace - Long Heavy Duty Brace Length 22'-6"(Min.) To 39'-0"(Max)	PB-05	208.000	6,500/Not Recommended

## Pipe Braces - Fixed



Description	OCM Part No.	Wt. lbs.	SWL MAX
Fixed Pipe Brace - Brace Length 21'-3"(Min.) To 22'-9"(Max)	PB-08	136.000	6,500
Fixed Pipe Brace W/ 5Ft Extension - Brace Length 26'-3"(Min.) To 27'-9"(Max)	PB-09	188.000	4,800
Fixed Pipe Brace W/ 10Ft Extension - Brace Length 31'-3"(Min.) To 32'-9"(Max)	PB-10	224.000	3,600
Fixed Pipe Brace - Brace Length 16'-6"(Min.) To 17'-6"(Max)	PB-17	105.000	6,500
Fixed Pipe Brace; 5 Ft Extension Only - Brace Length 5'-0"(Min.) To N/A(Max)	PB-EXT5 -F	23.000	N/A
Fixed Pipe Brace; 10 Ft Extension Only - Brace Length 10'-0"(Min.) To N/A(Max)	PB-EXT10-F	46.000	N/A
Fixed Pipe Brace Extension Coupler - Brace Length 4'-0"(Min.) To N/A(Max)	PB-EC	42.000	N/A

## Metal Form Patches



OCM Part No.	Size	Weight lbs	Qty per Box
MFP-1.75	1-3/4"	0.038	1,000
MFP-2.25	2-1/4"	0.041	
MFP-2.75	2-3/4"	0.043	

\*For covering holes and defects in form plywood for a smooth finish.  
 \*Sharp spikes make them easy to nail to plywood.

## Aluminum Form Tie



Part#	Wall Thickness Size	Type	End	Safe Working Load lbs.
AFT06FRETQN	6"	Full	Round	3,600
AFT08FRETQN	8"	Full	Round	3,600
AFT09FRETQN	9"	Full	Round	3,600
AFT10FRETQN	10"	Full	Round	3,600
AFT12FRETQN	12"	Full	Round	3,600
AFT14FRETQN	14"	Full	Round	3,600
AFT16FRETQN	16"	Full	Round	3,600
AFT18FRETQN	18"	Full	Round	3,600
AFT20FRETQN	20"	Full	Round	3,600
AFT22FRETQN	22"	Full	Round	3,600
AFT24FRETQN	24"	Full	Round	3,600
AFT06NRETQN	6"	Nominal	Round	3,600
AFT08NRETQN	8"	Nominal	Round	3,600
AFT10NRETQN	10"	Nominal	Round	3,600
AFT12NRETQN	12"	Nominal	Round	3,600
AFT14NRETQN	14"	Nominal	Round	3,600
AFT16NRETQN	16"	Nominal	Round	3,600
AFT18NRETQN	18"	Nominal	Round	3,600
AFT20NRETQN	20"	Nominal	Round	3,600
AFT22NRETQN	22"	Nominal	Round	3,600
AFT24NRETQN	24"	Nominal	Round	3,600
AFT0810NRETQN	8"-10" Combo	Nominal	Round	3,600

## Aluminum Form Pin



OCM Part No.	Type	Dia	Length	Bucket Qty
AFP-FH	Flat Head	5/8"	2-1/4"	250
AFP-RH	Round Head	5/8"	2-3/4"	250
AFP-CP	Combo Pin	5/8"	4-3/4"	250

## Aluminum Form Wedge



OCM Part No.	Type	Bucket Qty	Weight per pcs lbs
AFT-SW	Flat	250	0.26
AFT-CW	Curved	250	0.26

## Silver Bullet Base Pin



OCM Part No.	Carton Qty
AFT-SBP	500

## Aluminum Form Angle Pin



OCM Part No.	Carton Qty
AFP-45	50
AFP-90	100

## 90 Degree Angle Clip



OCM Part No.	Weight per pcs lbs	Qty per Box
AFP-90CLIP	0.17	100

## Aluminum Form Cap Clip



OCM Part No.	Weight per pcs lbs	Qty per Box
AFP-CC	0.08	100

## Aluminum Form Brickledge Bracket



OCM Part No.	Weight per pcs lbs	Qty per Box
AFP-BLB	0.46	100

## Aluminum Form Waler Brackets



OCM Part No.	Carton Qty
AFP-2X4	1
AFP-2X6	1



## Aluminum Form

### Form Styles

8/8-8/24 – Hole pattern

6-12 – Hole Pattern with Wide Bracing

Commercial 24" wide

- - Width 1" to 36"
- - Height 1' to 9'
- - Inset Face Sheets .125 Thickness
- - Closed Serrated Tube Bracing
- - Extruded Side Rails
- - Corner Gussets
- - 3/8" Thick End Bar
- - Weld Wire (4043)
- - Flat Steel Bushings
- - Ring Bushings
- - Attached Hardware is also available.
- - Custom Forms are available.

### Benefits of OCM's Systems

- Cost Effective (Up to 2000 Pours)
- Unskilled Labor
- Rapid Setting Time (One House Per Day)
- Light Weight
- Training Provided by OCM Staff
- Versatility of Forming System
- Low Maintenance

All of these benefits are key ingredients in producing wall forms that are unparalleled within the industry. OCM Inc.'s expert craftsmen work with only the highest grade aluminum (6061 T6) raw material to produce structurally sound wall panels and fillers designed to take the rigors of today's fast pace residential and commercial foundation companies.

OCM's forms are manufactured using .125" thick fully hardened aluminum face sheets with heavy duty extruded aluminum inset side rails for added protection from separation along weld lines. This provides maximum penetration of the weld and also reduces damage to the face sheet.



OCM's form bracing come with several different designs depending on the hole patterns. The 8/16-8-24 comes standard with a fully enclosed serrated tube measuring 1' x 2" and welded completely to the side rails to prevent concrete seepage. The 6-12 bracing come in a fully enclosed rectangular tube measuring 1½' x 3½". This pattern will give every panel and filler the support needed for today's jobsite.

Each side rail is fabricated to precise specifications, milled to the proper depth to support any wall tie manufactured. OCM Inc. manufactures a flat steel bushing for use on our side rails. Each bushing is attached using two solid steel rivets. Each bushing protects the form at the point of contact from damage through constant use of the pin and wedge attachments.

Finally, OCM Inc. attaches .125" thick corner gussets to all four corners of each panel and filler for added strength.



## Resi-Ply Form Tie



OCM Part No.	Carton Qty	Weight per pcs lbs
RT-6S	250	0.176
RT-6B	250	0.176
RT-8S	250	0.204
RT-8B	250	0.204
RT-10S	250	0.232
RT-10B	250	0.232
RT-12S	250	0.264
RT-12B	250	0.264
RT-14S	100	0.300
RT-14B	100	0.300

\*Bent or Straight available.

## Pencil Rod



OCM Part No.	Bundle
PR25-10	50
PR25-20	50

## Pencil Rod Roll



OCM Part No.	Weight per Roll lbs	Feet Per Roll
PR25-ROLL	100	Apprx. 600

## Pencil Rod Clamp



OCM Part No.	Size	Safe Working Load lbs
PRC25	1/4"	1,125
PRC375	3/8"	2,250

SWL provides a safety factor of approximately 2 to 1.

## Pencil Rod Puller



OCM Part No.	Size	Carton
25PRP	1/4"	15
375PRP	3/8"	10

## Metal Keyway



OCM Part No.	Size	Length	Gauge	Qty
MK350-10	4 1/2" for 5" Slab	10'	24 Ga	10/bundle; 25/skid
MK450-10	4 1/2" for 5" Slab	10'	24 Ga	10/bundle; 25/skid
MK550-10	5 1/2" for 6" Slab	10'	24 Ga	10/bundle; 25/skid
MK750-10	7 1/2" for 8" Slab	10'	24 Ga	10/bundle; 25/skid
MK950-10	9 1/2" for 8" Slab	10'	24 Ga	10/bundle; 25/skid

## Metal Keyway Stakes



OCM Part No.	Length	Gauge	Qty
MKS-12	12"	13 Ga	100
MKS-15	15"	13 Ga	100
MKS-18	18"	13 Ga	100
MKS-24	24"	13 Ga	100

## Steel Stakes

Round with Holes



OCM Part No.	Diameter	Length Available	Qty per Box
SS7512-RH	3/4"	12"	10
SS7518-RH	3/4"	18"	10
SS7524-RH	3/4"	24"	10
SS7530-RH	3/4"	30"	10
SS7536-RH	3/4"	36"	10
SS7542-RH	3/4"	42"	10
SS7548-RH	3/4"	48"	10
SS87X18-RH	7/8"	18"	10
SS87X24-RH	7/8"	24"	10
SS87X30-RH	7/8"	30"	10
SS87X36-RH	7/8"	36"	10
SS87X42-RH	7/8"	42"	10
SS87X48-RH	7/8"	48"	10

Solid Form Pins available upon request.

Cold rolled, machined point premium stakes are available in stock.

## Stake Puller



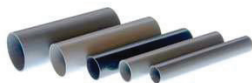
OCM Part No.	Wt. Lbs	Carton
SS-PULLER	12.000	1

## Dowel Cap



OCM Part No.	Size	Qty per Box
MDC050-5	1/2" X 5"	100
MDC075-5	3/4" X 5"	100
MDC100-5	1" X 5"	100
MDC125-5	1 1/4" X 5"	100
MDC150-6	1 1/2" X 6"	100

## Plastic Dowel Cap (White/Clear Color)



OCM Part No.	Size	Qty per Box
PDC050-4	1/2" X 4"	1,000
PDC62-4	5/8" X 4"	1,000
PDC075-4	3/4" X 4"	800
PDC100-4		500
PDC125-4	1" X 4"	500
PDC/CW050-4	1/2" X 4" Clear/ White	1,000
PDC/CW075-4	3/4" X 4" Clear/ White	800

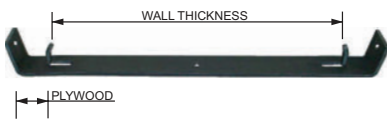
## Smooth Dowel



Description	OCM Part No.	Wt. lbs.	Bundle Qty.
Smooth Dowel - 1/2" X 12	SD50X12	0.668	10
Smooth Dowel - 1/2" X 18	SD50X18	1	10
Smooth Dowel - 1/2" X 24	SD50X24	1.34	10
Smooth Dowel - 3/4" X 18	SD75X18	2.26	10
Smooth Dowel - 3/4" X 24	SD75X24	3.01	10
Smooth Dowel 1" X 18"	SD100X18	4	10
Smooth Dowel 1" X 24	SD100X24	5.34	10
Smooth Dowel - 1-1/4" X 18	SD125X18	6.7	10

\*Epoxy coated dowels available upon request.

## Spreader Cleats



OCM Part No.	End Size	Wall Thickness	Weight Per Pc	Box Quantity	Safe Working Load
SC06-75	3/4"	6"	0.36	100	750
SC08-75	3/4"	8"	0.43	100	750
SC10-75	3/4"	10"	0.48	100	750
SC12-75	3/4"	12"	0.53	100	750
SC0562-118	1 1/8"	5 5/8"	0.39	100	750
SC06-118	1 1/8"	6"	0.41	100	750
SC0762-118	1 1/8"	7 7/8"	0.45	100	750
SC08-118	1 1/8"	8"	0.47	100	750
SC09-118	1 1/8"	9"	0.49	100	750
SC10-118	1 1/8"	10"	0.52	100	750
SC1162-118	1 1/8"	11 5/8"	0.55	100	750
SC12-118	1 1/8"	12"	0.57	100	750

SWL provides a safety factor of approximately 2 to 1.

## Monolithic Pouring Straps



OCM Part No.	Length	Box Qty	Weight per pcs lbs
SCMPS-15	15"	50	0.48
SCMPS-17	17"	50	0.55
SCMPS-19	19"	50	0.62
SCMPS-23	23"	50	0.75
SCMPS-27	27"	50	0.88

## Stacking Tie (Snapie Tie)



OCM Part No.	Wall Thickness	Weight Per Pc	Box Quantity
ST0562-118	5 5/8"	0.280	100
ST06-118	6"	0.300	100
ST0762-118	7 5/8"	0.320	100
ST08-118	8"	0.340	100
ST09-118	9"	0.370	100
ST10-118	10"	0.400	100
ST1162-118	11 5/8"	0.440	100
ST12-118	12"	0.460	100

## Stacking Tie Wedge (Snapie Tie Wedge)



OCM Part No.	Carton Qty	Weight per pcs lbs
STW-STACKING	50	0.350

## Screed Pads & Posts



OCM Part No.	Length	Bundle Qty	Weight per pcs lbs
SCRPADS	3" DIAM 1/2" NC THREAD	100	0.160
SCRPO8	8"	10	1.000
SCRPO10	10"	10	1.250
SCRPO12	12"	10	1.500
SCRPO16	16"	10	2.000
SCRPO18	18"	10	2.250
SCRPO24	24"	10	3.000
SCRPO30	30"	10	3.750
SCRPO36	36"	10	4.500

## Screed Hooks



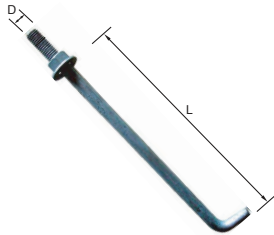
OCM Part No.	Description	Weight lbs	Box Qty
SCRHOOK-LONG	2" x 4" Screed Hook for Round Stake	0.54	100
SCRHOOK-SQLONG	2" x 4" Screed Hook for Square Stake	0.54	100
SCRHOOK-SHORT	1/2" x 2" Screed Hook for Round Stake	0.54	100
SCRHOOK-DR	2" x 4" Double Screed Hook for Round Stake	1.40	50
SCRHOOK-DSHORT	1/2" x 2" Screed Hook for Round Stake	0.54	50

## Footing Ties



OCM Part No.	Length	Bundle Qty	Weight per pcs lbs
FOOT06	6"	100	0.300
FOOT08	8"	100	0.383
FOOT10	10"	100	0.483
FOOT12	12"	100	0.550
FOOT14	14"	100	0.617
FOOT16	16"	100	0.633
FOOT18	18"	100	0.700
FOOT20	20"	100	0.800
FOOT24	24"	100	0.850
FOOT30	30"	100	0.967
FOOT36	36"	100	1.133
FOOT48	48"	100	1.567

## Anchor Bolt



OCM Part No.	Size D	Plating	Length L	Weight per pcs lbs
AB508P	1/2"	Plain	8"	0.46
AB5010P			10"	0.54
AB5012P			12"	0.63
AB506HDG	1/2"	Hot Dip Galv.	6"	0.38
AB508HDG			8"	0.46
AB5010HDG			10"	0.54
AB5012HDG			12"	0.63
AB5014HDG			14"	0.68
AB5016HDG			16"	0.74
AB5018HDG			18"	0.86
AB6208P	5/8"	Plain	8"	0.72
AB6210P			10"	0.84
AB6212P			12"	1.20
AB6208HDG	5/8"	Hot Dip Galv.	8"	0.74
AB6210HDG			10"	0.86
AB6212HDG			12"	1.22
AB6218HDG			18"	1.42
AB7518P			3/4"	Plain
AB7512HDG	3/4"	Hot Dip Galv.	12"	1.62
AB7516HDG			16"	2.40
AB7524HDG			24"	2.84
62RC3318FWHDG	For 5/8" Hole	Flat Washer	3" x 3" x 1/8"	
62RC33316FWHDG			3" x 3" x 3/16"	
62RC22316FWHDG			2" x 2" x 3/16"	

-Plain or HDG per ASTM A307

-Rolled Thread **36**

## Flat Washer for Anchor Bolt



OCM Part No.	Size D	Length L	Finish	Box Qty.	Weight Per Pc lbs
62RC3318FWHDG	5/8"	3" x 3" x 1/8" Thick Flat Washer HDG for 5/8" Hole	HDG	50	0.450
62RC33316FWHDG	5/8"	3" x 3" x 3/16" Thick Flat Washer HDG for 5/8" Hole	HDG	50	0.550
62RC22316FWHDG	5/8"	2" X 2" X 3/16" Thick Flat Washer HDG for 5/8" Hole	HDG	50	0.350

## Anchor Bolts Nuts



Description	OCM Part No.	Wt. lbs.	Box Qty.
Anchor Bolt Nut 1/2" Galvanized	ABN50G	0	50
Anchor Bolt Nut 1/2" Plain	ABN50P	0	50
Anchor Bolt Nut 3/4" Galvanized	ABN75G	0	50
Anchor Bolt Nut 3/4" Plain	ABN75P	0	50

## Anchor Bolts Washers



Description	OCM Part No.	Wt. Lbs.	Box Qty.
Anchor Bolt Round Cut Washer 1/2" Galvanized	ABW50G	0	50
Anchor Bolt Round Cut Washer 1/2" Plain	ABW50P	0	50
Anchor Bolt Round Cut Washer 3/4" Galvanized	ABW75G	0	50
Anchor Bolt Round Cut Washer 3/4" Plain	ABW75P	0	50

\*Additional sizes of anchor bolts available and direct shipments available.

## T-Posts



OCM Part No.	Weight per pcs lbs	Qty Rolls/box
TPOST5SP-SPADEHD	6.2	5
TPOST6SP-SPADEHD	7.5	5

## Rebar Cap



OCM Part No.	Size	Carton Qty	Weight per pcs lbs
RC-DISC10	#3 - #8	25	0.50
RC-DISCHH-M	#8 - #12	25	0.50

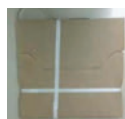
**California OSHA Approved**

## Rebar Mushroom Cap



OCM Part No.	Size	Box Qty	Weight per pcs lbs
RC-MUSH	#3 - #8	500	0.02

## Punched Hole Strapping



OCM Part No.	Wt. Lbs	Box Qty
PHS-PB	15.200	1

## Pry Bar | Burke Bar



OCM Part No.	Wt. Lbs	Length	Blade Width
PB-OCM47	7.00	47"	3"
PB-OCM56	15.00	56-1/4"	3"

Full line of Rebar Supports available. Plastic and metal Slab Bolster, SBU, Individual High Chairs, Grade Chairs, Plastic Wheel Spacers, Paving Chairs, Dowel Caps and Smooth Dowels.



## Manual Rebar Cutter-Bender

- Cuts and Bends up to #5(5/8") Grade 60 Rebar.
- Sold unmounted OCM Part# **RB-CUTTER-A**
- Sold mounted on wood board # **RB-CUTTER**
- Permits Bending up to 180 degrees.
- JAWS are high strength steel and allow cutting of material up to 48 rockwell hardness.



## Rebar Hickey Bender

- 20" Rebar Hickey Bender can be used for up to #3(3/8") Rebar  
-OCM Part# **RBB20**
- 22" Rebar Hickey Bender can be used for up to #4(1/2") Rebar  
-OCM Part# **RBB22**
- 34" Rebar Hickey Bender can be used for up to #5(5/8") Rebar  
-OCM Part# **RBB34**
- Often these tools are used as pairs when making close radius bends.



## Rebar Hickey with Forged Head

- 24" Handle length can bend up to #4(1/2") Rebar.  
-Double Heads at 65 degree angle.  
-Bending angle is 90 degree.  
-OCM Part# **RBH50**
- 40" Handle length can bend up to #5(5/8") Rebar.  
-Single head at 65 degree angle.  
-OCM Part# **RBH62**
- 40" Handle length can bend up to #5(5/8") Rebar.  
-Single head at 65 degree angle.  
-OCM Part# **RBH75**



## OCM Multipurpose Pry Bar

- 47" Handle weighs 7 lbs and has a 3" blade.  
-OCM Part# **PB-OCM47**
- 56" Handle weighs 15 lbs and has a 3" blade.  
-OCM Part# **PB-OCM56**



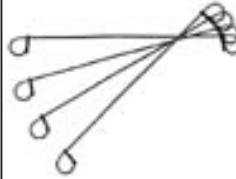
## Tie Wire

- 16 or 16.5 gauge, 3.5 lb rolls, and 20 rolls per box/ 720 rolls per skid.
- Plain and PVC available.  
-OCM Part# **TIW16** or **TIW16.5** for **Plain**  
-OCM Part# **TIW16-PVC** for **PVC Coated**



## #9/#11 Binding Wire

- 100 lb rolls, 10 rolls per wire carrier.
- Used for tying rebar bundles.  
-OCM Part# **TIW09-100**  
-OCM Part# **TIW11-100**



## Bag Ties

- 4"-12" Plain or PVC coated are available.
- 16 or 17 gauge available.



## Bag Tie Hand Twister

- Wood Handle  
-OCM Part# **BT-TWISTER**



## Tie Wire Reel

- Aluminum die cast material.  
-OCM Part# **TIW-REEL**



## OSHA Rebar Cap

- #3 - #8 Rebar  
-OCM Part# **RC-DISC10**
- #8 - #12 Rebar  
-OCM Part# **RC-DISCHH-M**



## Rebar Mushroom Cap

- #3 - #8 Rebar  
-OCM Part# **RC-MUSH**

## Rebar Cutter-Bender



Description	OCM Part No.	Wt. lbs.	Box Qty.
Manual Rebar Bender/Cutter - Cuts And Bends Up To #5 (5/8") (16Mm) Grade 60 Rebar	RB-CUTTER	35	1

## Rebar Hickey Bender



Description	OCM Part No.	Wt. lbs.	Box Qty.
Rebar Bender - 20" Long - For Up To #3 (3/8")(10mm) Rebar	RBB20	2.3	1
Rebar Hickey - 22" Long - For Up To #4 (1/2")(13mm) Rebar	RBB22	2.7	1
Rebar Hickey - 34" Long - For Up To #5 (5/8")(16mm) Rebar	RBB34	6	1

## Rebar Hickey



Description	OCM Part No.	Wt. lbs.	Box Qty.
Rebar Hickey - For Up To #4 (1/2")(13mm) Rebar	RBH50	3.5	1
Rebar Hickey - For Up To #5 (5/8")(16mm) Rebar	RBH62	9	1
Rebar Hickey - For Up To #6 (3/4")(19mm) Rebar	RBH75	10	1

## Tie Wire

PVC coated available



OCM Part No.	Wire Gauge	Weight per pcs lbs.	Box Qty.
TIW16	16 ga.	3.5 lbs.	20
TIW16-PVC	16 ga.	3.5 lbs.	20
TIW16.5	16.5 ga.	3.5 lbs.	20

## Binding Wire

**#9 | #11**

\*For Tying Rebar Bundles



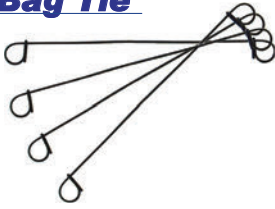
OCM Part No.	Wire Gauge	Weight lbs per roll
TIW09-100	9 ga. (#9 Wire)	100 lbs
TIW11-100	11 ga. (#11 Wire)	100 lbs

## Tie Wire Reel - Zinc Diecast



OCM Part No.	Weight per pcs lbs	Qty Rolls/box
TIW-REEL	2.0 lbs	1

## Bag Tie



Description	Size	OCM Part No.	Wt. lbs.	Bag Quantity
Bag Ties Bar Loop Ties	4"	BT16-4	30	1,000/Bundle; 5,000/Bag
	4.5"	BT16-4.5	30	1,000/Bundle; 5,000/Bag
	5"	BT16-5	34	1,000/Bundle; 5,000/Bag
	5.5"	BT16-5.5	34	1,000/Bundle; 5,000/Bag
	6"	BT16-6	43	1,000/Bundle; 5,000/Bag
	7"	BT16-7	46	1,000/Bundle; 5,000/Bag
	8"	BT16-8	48	1,000/Bundle; 5,000/Bag
	9"	BT16-9	53	1,000/Bundle; 5,000/Bag
	10"	BT16-10	58	1,000/Bundle; 5,000/Bag
	12"	BT16-12	63	1,000/Bundle; 5,000/Bag
PVC Bag Ties	6"	BT16-6-PVC	43	1,000/Bundle; 5,000/Bag
	7"	BT16-7-PVC	46	1,000/Bundle; 5,000/Bag
	8"	BT16-8-PVC	48	1,000/Bundle; 5,000/Bag
	9"	BT16-9-PVC	53	1,000/Bundle; 5,000/Bag
Bag Ties Bar Loop Ties (Atlanta/Dallas/ Houston)	4"	BT17-4	30	1,000/Bundle; 5,000/Bag
	4.5"	BT17-4.5	30	1,000/Bundle; 5,000/Bag
	5"	BT17-5	34	1,000/Bundle; 5,000/Bag
	5.5"	BT17-5.5	34	1,000/Bundle; 5,000/Bag
	6"	BT17-6	43	1,000/Bundle; 5,000/Bag
	6.5"	BT17-6.5	46	1,000/Bundle; 5,000/Bag
	7"	BT17-7	48	1,000/Bundle; 5,000/Bag
	7.5"	BT17-7.5	50	1,000/Bundle; 5,000/Bag
	8"	BT17-8	53	1,000/Bundle; 5,000/Bag
	9"	BT17-9	58	1,000/Bundle; 5,000/Bag
	12"	BT17-12	63	1,000/Bundle; 5,000/Bag
Bag Ties Bar Loop Ties (Florida Only)	4.5"	BT17-4.5-F	24	1,000/Bundle - 4,000/Bag
	5.5"	BT17-5.5-F	27	1,000/Bundle - 4,000/Bag
	6"	BT17-6-F	35	1,000/Bundle - 4,000/Bag
	6.5"	BT17-6.5-F	37	1,000/Bundle - 4,000/Bag
	7"	BT17-7-F	38	1,000/Bundle - 4,000/Bag
	7.5"	BT17-7.5-F	40	1,000/Bundle - 4,000/Bag
	8"	BT17-8-F	42.5	1,000/Bundle - 4,000/Bag
	9"	BT17-9-F	46.5	1,000/Bundle - 4,000/Bag
	9.5"	BT17-9.5-F	50.5	1,000/Bundle - 4,000/Bag

## Bag Tie Hand Twister - Wood Handle



<b>OCM Part No.</b>
<b>BT-TWISTER</b>



## She-Bolts



OCM Part No.	She Bolt External Thread		Inside Tie Rod Thread		Overall Length	Safe Working Load lbs
	Diameter	Type	Diameter	Type		
SBA7550-20P	3/4"	Acme	1/2"	Coil	20"	9,000
SB7550-17	3/4"	Coil	1/2"	Coil	17"	9,000
SB7550-24P	3/4"	Coil	1/2"	Coil	24"	9,000
SB7550-20P	3/4"	Coil	1/2"	Coil	20"	9,000
SB12575-18	1-1/4"	Coil	3/4"	Coil	18"	18,000
SB12575-20	1-1/4"	Coil	3/4"	Coil	20"	18,000
SB12575-24P	1-1/4"	Coil	3/4"	Coil	24"	18,000
SB12575-30	1-1/4"	Coil	3/4"	Coil	30"	18,000
SB15010020-P	1-1/2"	Coil	1"	Coil	20"	37,500
SB150100-24P	1-1/2"	Coil	1"	Coil	24"	37,500
SB150100-30-8	1-1/2"	Coil	1"	Coil	30"	37,500
SB125100-20-12-3	1-1/4"	Coil	1"	Coil	20"	37,500

SWL provides a safety factor of approximately 2 to 1.

## Taper Tie



OCM Part No.	Large End of Tie		Small End of Tie		Standard Tie Lengths	Tapered Body Diameter	Safe Working Load (lbs)
	Coil Thread Diameter	Length of Thread	Coil Thread Diameter	Length of Thread			
7575TT42P	3/4"	10"	3/4"	6"	42"	.750" to .670"	7,500
7550TT36	3/4"	10"	1/2"	2"	36"	.670" to .500"	7,500
7550TT48P	3/4"	10"	1/2"	2"	48"	.670" to .500"	7,500
75100TT42P	1"	10"	3/4"	6"	42"	.884" to .750"	18,000
10075TT48P	1"	10"	3/4"	6"	48"	.884" to .750"	18,000
75100TT54P	1"	10"	3/4"	6"	54"	.884" to .750"	18,000
75100TT60P	1"	10"	3/4"	6"	60"	.884" to .750"	18,000
100125TT36P	1-1/4"	10"	1"	6"	36"	1.113" to 1.00"	34,000
100125TT48P	1-1/4"	10"	1"	6"	48"	1.113" to 1.00"	34,000
100125TT54P	1-1/4"	10"	1"	6"	54"	1.113" to 1.00"	34,000
100125TT66P	1-1/4"	10"	1"	6"	66"	1.113" to 1.00"	34,000
100125TT72P	1-1/4"	10"	1"	6"	72"	1.113" to 1.00"	34,000
125100TT45P	1-1/4"	10"	1"	6"	45"	1.113" to 1.00"	34,000

SWL provides a safety factor of approximately 2 to 1.

\*Additional Length Available upon Request.

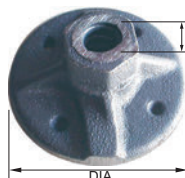
## Coil Nut Washer



OCM Part No.	D Size	DIA Washer Dia.	Weight per pcs lbs	Safe Working Load lbs
50CNW	1/2"	4"	0.75	4,500
75CNW	3/4"	4"	0.75	9,000

SWL provides a safety factor of approximately 2 to 1.

## Acme Nut Washer



OCM Part No.	D Size	Weight per pcs lbs	Safe Working Load lbs
75ANW	3/4"	0.75	9,000

SWL provides a safety factor of approximately 2 to 1.

## Bridge Overhang Bracket



Guard Rail & Extender Available  
\*Proper Engineering REQUIRED

OCM Part No.	Weight per pcs lbs	S.W.L lbs
OCM-BOB	45	3,750

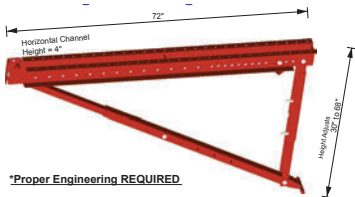
## Deep Bridge Overhang Bracket



Guard Rail & Extender Available  
\*Proper Engineering REQUIRED

OCM Part No.	Weight per pcs lbs	S.W.L lbs
OCM-BOBLGN	53	3,750

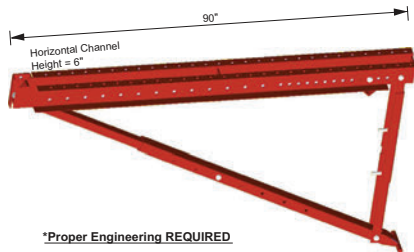
## 72" Bridge Overhang Bracket



\*Proper Engineering REQUIRED

OCM Part No.	Description	Weight per pcs lbs
OCM-BOBDH72	Bridge Overhang Bracket 72"	145

## Super Duty Bridge Overhang Bracket



\*Proper Engineering REQUIRED

OCM Part No.	Description	Weight per pcs lbs
OCM-BOBDH90	Super Duty Bridge Overhang Bracket 90"	159

## Junior Overhang Bracket



OCM Part No.	Description	Weight per pcs lbs
OCM-BOBJR	Bridge Overhang Bracket Junior	35

## Western Bridge Overhang Bracket



OCM Part No.	Size	Weight per pcs lbs
OCM-BOBW42	42"	50
OCM-BOBW28	28"	40

## Bridge Overhang Bracket Extension



OCM Part No.	Description	Weight per pcs lbs
OCM-BOBEX-D	Overhang-Bracket Extension (NOT Set)	3.0

\* Includes two 1/2" x 1" Bolts and Nuts

## Bridge Overhang Bracket Guard Rail Receptacle



OCM Part No.	Description	Weight per pcs lbs
OCM-GRR	2 x 4 Guard Rail Receptacle	3.5

\* Includes two 1/2" x 3" Bolts and Nuts

## Conversion Kit



OCM Part No.	Description	Weight per pcs lbs
OCM-BOBCONV	Bridge Overhang Bracket Conversion Kit	19.6

-Converts Standard Adjustable OCM-BOB (49) to a Deep Bracket OCM-BOBLGN (49D).

## BOB Wall Plate

For Bridge Overhang Bracket



OCM Part No.	Weight per pcs lbs
WPLT-ASSY	1.65
WPLP-WASHER	0.40

## Hook Bolt



OCM Part No.	Size D	Length	Box Qty
BHD1LA-3P	1/2"	3"	150
BHD1LA-3.5P		3-1/2"	
BHD1LA-4.5P		4-1/2"	
BHD1LA-5P		5"	
BHD1LA-6.5P		6-1/2"	
BHD1LA-4.5G		4-1/2"	

- Plain or Galvanized available.

## HEAVY TY-BACK 90° - 45° HANGER



OCM Part No.	Dia	Safe Working Load lbs
BH-HTBH-A	1/2"	6,000
BH-HTBH-A-75	3/4"	10,000
BH-HTBH-AS (Supplement)	1/2"	6,000

-SWL provides a safety factor of approximately 2 to 1.  
-Please specify flange width and finish (PLAIN or HDG) when ordering.

## TYPE#1 90° - 45° ANGLE HANGER



OCM Part No.	Dia	Safe Working Load lbs
BH-HFR-A	1/2"	3,800

-SWL provides a safety factor of approximately 2 to 1.  
-Please specify flange width and finish (PLAIN or HDG) when ordering.

## TYPE#2 AND TYPE #3 90° - 45° HAUNCH ANGLE HANGER



OCM Part No.	Dia	Haunch Height	Safe Working Load lbs
BH-HRH-A #2	1/2"	1"	3,000
BH-HRH-A #3	1/2"	1-1/2"	3,000

-SWL provides a safety factor of approximately 2 to 1.  
-Please specify flange width, finish (PLAIN or HDG), and Haunch Height (#2 or #30 when ordering).

## 45° PRECAST ANGLE HANGER



OCM Part No.	Dia	TYPE	Safe Working Load lbs
BH-PHFR-HA	1/2"	STANDARD	4,500
BH-PHHFR-HA		HEAVY DUTY	6,000

-SWL provides a safety factor of approximately 2 to 1.  
-Please specify finish (PLAIN or HDG) when ordering.

## TYPE#1 90° - 45° BROACH HANGER



OCM Part No.	Dia	Girder Flange Width	Qty per Box	Safe Working Load lbs
BH-BHFR-A	1/2"	14"	200	4,500

-SWL provides a safety factor of approximately 2 to 1.  
-Please specify flange width, drop height, and finish (PLAIN or HDG) when ordering.

## HEAVY TYPE#1 45° TY-DOWN HANGER



OCM Part No.	Dia	Safe Working Load lbs
BH-HHFR-HKA	1/2"	6,000
BH-HHFR-HKA-75	3/4"	10,000

-SWL provides a safety factor of approximately 2 to 1.  
-Please specify flange width and finish (PLAIN or HDG) when ordering.

## TYPE#1 45° HALF HANGER



OCM Part No.	Dia	Style	Qty per Box	Safe Working Load lbs
BH-HFR-HA	1/2"	Shaped	200	3,800
BH-HFR-HWA		Straight		

-SWL provides a safety factor of approximately 2 to 1.  
 -CAUTION: Care should be exercised when welding any hanger.

## TYPE#1 45° ADJUSTABLE HALF HANGER



OCM Part No.	Dia	Clips	Qty per Box	Safe Working Load lbs
BH-HFR-HAJ-A-1	1/2"	1	200	1,100
BH-HFR-HAJ-A-2		2		3,000

-SWL provides a safety factor of approximately 2 to 1.  
 -Extra clips available upon request.  
 -Available in PLAIN or HDG.

## TYPE#1 HEAVY 15°- 45° ANGLE HANGER



OCM Part No.	Dia	Safe Working Load lbs
BH-HHFRL-A	1/2"	To be determined by Application
BH-HHFRL-AS		

-SWL provides a safety factor of approximately 2 to 1.  
 -Please specify flange width and finish (PLAIN or HDG) when ordering.

## TYPE#1 HEAVY 15°- 45° ANGLE HANGER



OCM Part No.	Dia	Safe Working Load lbs
BH-HFRL-A	1/2"	3,800

-SWL provides a safety factor of approximately 2 to 1.  
 -Please specify flange width and finish (PLAIN or HDG) when ordering.

## **HEAVY TY - BACK 90°- 90° HANGER**



OCM Part No.	Dia	Safe Working Load lbs
BH-HTBH	1/2"	6,000
BH-HTBH-75	3/4"	10,000

-SWL provides a safety factor of approximately 2 to 1.  
-Please specify flange width and finish (PLAIN or HDG) when ordering.

## **TYPE#1 90°- 90° HANGER**



OCM Part No.	Dia	Safe Working Load lbs
BH-HFR	1/2"	3,800

-SWL provides a safety factor of approximately 2 to 1.  
-Please specify flange width and finish (PLAIN or HDG) when ordering.

## **TYPE#2 AND TYPE#3 90°- 90° HAUNCH HANGER**



OCM Part No.	Haunch Height	Safe Working Load lbs
BH-HRH-2	1"	3,000
BH-HRH-3	1-1/2"	

-SWL provides a safety factor of approximately 2 to 1.

## **90° PRECAST HALF HANGER**



OCM Part No.	Dia	Type	Girder Flange Width	Qty per Box	Safe Working Load lbs
BH-PHFR-H	1/2"	STANDARD	14"	200	3,500
BH-PHTBH-H		HEAVY DUTY			6,000

-SWL provides a safety factor of approximately 2 to 1.  
-Please specify PLAIN or HDG when ordering.

## **90° - 90° BROACH HANGER**



OCM Part No.	Dia	Safe Working Load lbs
BH-BH	1/2"	4,500

-SWL provides a safety factor of approximately 2 to 1.  
-Please specify flange width and drop height when ordering.

## **HEAVY - TY - BACK 90° TY - DOWN HANGER**



OCM Part No.	Dia	Safe Working Load lbs
BH-HTBH-HK	1/2"	6,000
BH-HTBH-HK-75	3/4"	10,000

-SWL provides a safety factor of approximately 2 to 1.  
-Please specify flange width and finish (PLAIN or HDG) when ordering.

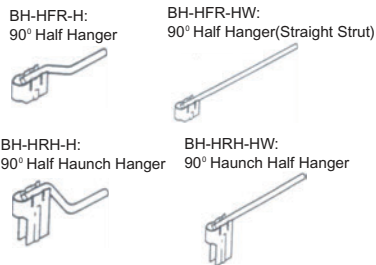
## TYPE#1 90° TY - DOWN HANGER



OCM Part No.	Dia	Safe Working Load lbs
BH-HFR-HK	1/2"	3,800

-SWL provides a safety factor of approximately 2 to 1.  
 -Please specify flange width and finish (PLAIN or HDG) when ordering.

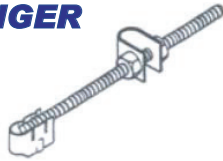
## TYPE#1 90° HALF HANGER, TYPE#2 AND TYPE#3 HAUNCH HALF HANGER



OCM Part No.	Haunch Height	Safe Working Load lbs
BH-HFR-H		3,500
BH-HFR-HW		3,500
BH-HRH-H #1	3/8"	3,000
BH-HRH-H #2	1"	3,000
BH-HRH-H #3	1-1/2"	3,000
BH-HRH-HW		3,000

-SWL provides a safety factor of approximately 2 to 1.  
 -CAUTION: Care must be taken when welding a hanger.

## TYPE#1 90° ADJUSTABLE HALF HANGER



OCM Part No.	Dia	Clips	Safe Working Load lbs
BH-HFR-HAJ-1	1/2"	1	1,100
BH-HFR-HAJ-2		2	3,000

-SWL provides a safety factor of approximately 2 to 1.

## HEAVY 15° - 15° HANGER



OCM Part No.	Dia	Safe Working Load lbs
BH-HHFRL	1/2"	6,000

-SWL provides a safety factor of approximately 2 to 1.

## TYPE#1 15° - 15° HANGER



OCM Part No.	Dia	Safe Working Load lbs
BH-HFRL	1/2"	3,800

-SWL provides a safety factor of approximately 2 to 1.  
 -Please specify flange width and finish (PLAIN or HDG) when ordering.

## 15° PRECAST HALF HANGER



OCM Part No.	Type	Safe Working Load lbs
BH-PHFRL-H	Standard	3,500
BH-PHHFRL-H	Heavy Duty	6,000

-SWL provides a safety factor of approximately 2 to 1.  
 -Please specify finish (PLAIN or HDG) when ordering.

## SLAB BOLSTER PLAIN



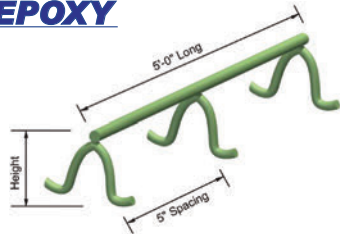
OCM Part No.	Weight lbs	Bundle Qty If
SB75-P	0.21	100
SB100-P	0.22	100
SB125-P	0.23	100
SB150-P	0.23	100
SB200-P	0.23	100
SB225-P	0.24	100
SB250-P	0.25	100
SB300-P	0.27	100

## SLAB BOLSTER TIPPED/DIPPED



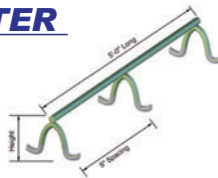
OCM Part No.	Weight lbs	Bundle Qty If
SB75-PT/PD2	0.21	100
SB100-PT/PD2	0.22	100
SB125-PT/PD2	0.23	100
SB150-PT/PD2	0.23	100
SB200-PT/PD2	0.23	100
SB225-PT/PD2	0.24	100
SB250-PT/PD2	0.25	100
SB300-PT/PD2	0.27	100
SB325-PT/PD2	0.28	100
SB350-PT/PD2	0.30	100
SB400-PT/PD2	0.32	100

## SLAB BOLSTER EPOXY



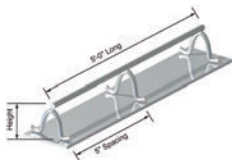
OCM Part No.	Height	Weight lbs	Bundle Qty If
SB75-E	3/4"	0.21	100
SB100-E	1"	0.22	
SB125-E	1-1/4"	0.23	
SB150-E	1-1/2"	0.23	
SB200-E	2"	0.23	
SB225-E	2-1/4"	0.24	
SB250-E	2-1/2"	0.25	
SB300-E	3"	0.27	

## SLAB BOLSTER EPOXY & DIPPED



OCM Part No.	Height	Weight lbs	Bundle Qty If
SB100-EPD	1"	0.39	100
SB150-EPD	1-1/2"	0.40	
SB200-EPD	2"	0.41	
SB300-EPD	3"	0.43	

## SLAB BOLSTER With SAND PLATE



OCM Part No.	Weight lbs	Bundle Qty If
SB200-PP	0.27	100
SB300-PP	0.35	100

## BEAM BOLSTER TIPPED/DIPPED



OCM Part No.	Height	Weight lbs	Bundle Qty If
BB100-PD2	1"	0.26	100
BB150-PD2	1-1/2"	0.26	
BB200-PD2	2"	0.28	
BB300-PD2	3"	0.32	

Additional sizes from 3/4" to 5" available.  
\*\*Please inquire about domestic and CRSI requirements.

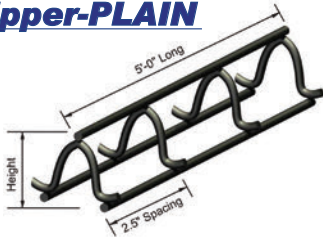


## Beam Bolster Upper-PLAIN



OCM Part No.	Height	Weight lbs	Bundle Qty If
BBU100-P	1"	0.42	100
BBU150-P	1-1/2"	0.44	
BBU200-P	2"	0.61	
BBU300-P	3"	0.77	

## Slab Bolster Upper-PLAIN



\*Taller sizes upon request.

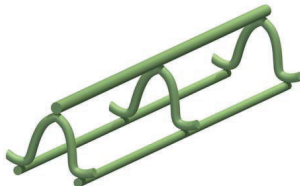
Typical Applications include:

- Slab on grade.
- Slab on deck.
- Supporting the upper mat of reinforcing steel in concrete.

OCM Part No.	Height	Weight lbs	Bundle Qty If
SBU75-P3	3/4"	0.38	100
SBU100-P3	1"	0.39	
SBU125-P3	1-1/4"	0.40	
SBU150-P3	1-1/2"	0.40	
SBU175-P3	1-3/4"	0.40	
SBU200-P3	2"	0.40	
SBU225-P3	2-1/4"	0.41	
SBU250-P3	2-1/2"	0.42	
SBU275-P3	2-3/4"	0.43	
SBU300-P3	3"	0.44	
SBU325-P3	3-1/4"	0.48	
SBU350-P3	3-1/2"	0.48	
SBU400-P3	4"	0.48	
SBU425-P3	4-1/4"	0.50	
SBU450-P3	4-1/2"	0.52	
SBU475-P3	4-3/4"	0.52	
SBU500-P3	5"	0.52	
SBU550-P3	5-1/2"	0.64	
SBU600-P3	6"	0.64	

\*Please inquire about domestic and CRSI requirements.

## Slab Bolster Upper-EPOXY



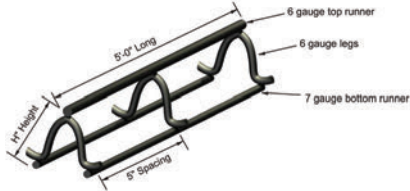
OCM Part No.	Weight lbs	Bundle Qty If
SBU175-E	0.38	100
SBU100-E	0.38	100
SBU125-E	0.39	100
SBU150-E	0.40	100
SBU175-E	0.40	100
SBU200-E	0.40	100
SBU225-E	0.42	100
SBU250-E	0.44	100
SBU275-E	0.48	100
SBU300-E	0.48	100
SBU325-E	0.48	100
SBU350-E	0.52	100
SBU400-E	0.64	100
SBU425-E	0.64	100
SBU450-E	1.64	100
SBU500-E	3.64	100
SBU525-E	4.64	100
SBU550-E	5.64	100
SBU600-E	7.64	100

## Slab Bolster Upper - EPOXY & DIPPED



OCM Part No.	Wt. lbs.	Bundle Qty If
SBU100-EPD	0.39	100
SBU150-EPD	0.4	100
SBU200-EPD	0.41	100

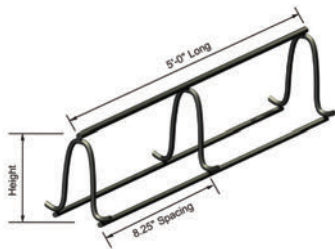
## Continuous Mesh Chair Upper-PLAIN



OCM Part No.	Height	Weight lbs	Bundle Qty If
SBU75-P2	3/4"	0.32	100
SBU100-P2	1"	0.32	
SBU125-P2	1-1/4"	0.33	
SBU150-P2	1-1/2"	0.33	
SBU175-P2	1-3/4"	0.35	
SBU200-P2	2"	0.35	
SBU225-P2	2-1/4"	0.37	
SBU250-P2	2-1/2"	0.37	
SBU275-P2	2-3/4"	0.39	
SBU300-P2	3"	0.39	
SBU325-P2	3-1/4"	0.41	
SBU350-P2	3-1/2"	0.41	
SBU400-P2	4"	0.43	
SBU425-P2	4-1/4"	0.45	
SBU450-P2	4-1/2"	0.45	
SBU475-P2	4-3/4"	0.47	
SBU500-P2	5"	0.47	
SBU550-P2	5-1/2"	0.49	
SBU600-P2	6"	0.51	
SBU650-P2	6-1/2"	0.53	
SBU700-P2	7"	0.55	
SBU750-P2	7-1/2"	0.57	
SBU800-P2	8"	0.59	

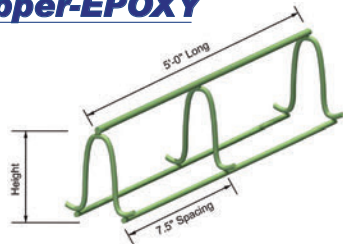
\*Please inquire about domestic and CRSI requirements.

## Continuous High Chair Upper-PLAIN



OCM Part No.	Weight lbs	Bundle Qty If
CHCU300-P	0.62	50
CHCU350-P	0.66	50
CHCU400-P	0.66	50
CHCU450-P	0.70	50
CHCU500-P	0.70	50
CHCU600-P	0.81	50
CHCU650-P	0.87	50
CHCU700-P	0.88	50
CHCU800-P	0.93	50
CHCU850-P	0.99	50
CHCU900-P	0.99	50

## Continuous High Chair Upper-EPOXY



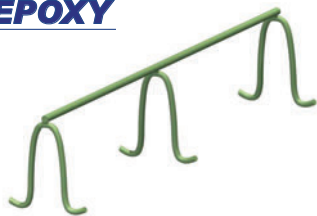
OCM Part No.	Weight lbs	Bundle Qty If
CHC350-E	0.36	50
CHC400-E	0.36	50
CHC450-E	0.39	50
CHC500-E	0.39	50
CHC600-E	0.53	50
CHCU700-E	0.880	100
CHCU800-E	0.930	100
CHCU900-E	0.980	100

## Continuous High Chair -DIPPED



OCM Part No.	Weight lbs	Bundle Qty If
CHC350-PD2	0.36	100
CHC400-PD2	0.36	100
CHC500-PD2	0.39	100
CHC600-PD2	0.53	100

## Continuous High Chair -EPOXY



OCM Part No.	Weight lbs	Bundle Qty If
CHC350-E	0.32	50
CHC400-E	0.34	50
CHC425-E	0.35	50
CHC600-E	0.49	50
CHC800-E	0.90	50

## Individual High Chairs Plain



OCM Part No.	Weight lbs	Box Qty
IHC200-P	0.21	100
IHC250-P	0.21	100
IHC300-P	0.21	100
IHC350-P	0.26	100
IHC400-P	0.26	100
IHC450-P	0.30	100
IHC500-P	0.30	100
IHC600-P	0.47	100

## Individual High Chairs Dipped



OCM Part No.	Weight lbs	Box Qty
IHC200-PD	0.21	100
IHC225-PD	0.21	100
IHC250-PD	0.21	100
IHC300-PD	0.21	100
IHC325-PD	0.26	100
IHC350-PD	0.26	100
IHC400-PD	0.26	100
IHC450-PD	0.30	100
IHC500-PD	0.30	100
IHC550-PD	0.30	100
IHC600-PD	0.30	100

## Individual High Chairs EPOXY



OCM Part No.	Weight lbs	Box Qty
IHC200-E	0.21	100
IHC250-E	0.21	100
IHC300-E	0.21	100
IHC350-E	0.26	100
IHC400-E	0.26	100
IHC425-E	0.30	100
IHC450-E	0.30	100
IHC500-E	0.30	100
IHC600-E	0.47	100

## Individual High Chair With Plate



OCM Part No.	Weight lbs	Box Qty
IHC200-PP	0.12	100
IHC300-PP	0.16	100
IHC350-PP	0.18	100
IHC400-PP	0.20	100

**Individual Bar Chairs**  
**Plain**



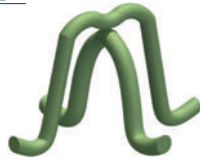
OCM Part No.	Weight lbs	Box Qty
IBC75-P	0.05	100
IBC100-P	0.08	100
IBC125-P	0.09	100

**Individual Bar Chairs**  
**Dipped**



OCM Part No.	Weight lbs	Box Qty
IBC75-PD	0.05	100
IBC100-PD	0.08	100
IBC125-PD	0.09	100
IBC150-PD	0.09	100

**Individual Bar Chairs**  
**EPOXY**



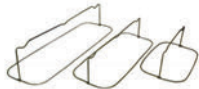
OCM Part No.	Weight lbs	Box Qty
IBC75-E	0.05	100
IBC100-E	0.08	100
IBC125-E	0.09	100
IBC150-E	0.09	100
IBC175-E	0.10	100

**Footer Chairs**



OCM Part No.	Width	Length	Weight lbs
SBU300-10P	3"	10"	0.37
SBU300-15P	3"	15"	0.55
SBU300-20P	3"	20"	0.74

**Rod Chairs**



OCM Part No.	Description	Weight lbs	Box Qty
RC2-368	Rod Chair 2 Bar, 3" Height, 6" Bar Spacing, 8" Wide	0.15	100
RC3-3516	Rod Chair 3 Bar, 3" Height, 5" Bar Spacing, 16" Wide	0.48	
RC3-3720	Rod Chair 3 Bar, 3" Height, 7" Bar Spacing, 20" Wide	0.50	
RC3-16WPB	Rod Chair 3 Bar, 3" Height, 5" Bar Spacing, 16" Wide -West Palm Beach	0.48	
RC3-20WPB	Rod Chair 3 Bar, 3" Height, 7" Bar Spacing, 20" Wide -West Palm Beach	0.50	

**FS Stakes**



OCM Part No.	Height	Rebar Size
FS-3-50	3"	1/2"
FS-4-50	4"	1/2"
FS-4-62	4"	5/8"
FS-4-75	4"	3/4"
FS-4.5-62	4-1/2"	5/8"
FS-4.5-75	4-1/2"	3/4"
FS-5-62	5"	5/8"
FS-5-75	5"	3/4"



## **ALL PLASTIC BAR SUPPORT PRODUCTS**

**-Plastic Uni Chair**



**-Plastic Slab Bolster**



**-Grade Chair  
with Base**



**-Plastic Paving Chair**



**-Wheel Spacers**



[www.ocm-inc.com](http://www.ocm-inc.com)

## Plastic Uni Chair



### DESCRIPTION:

The OCM Uni Chair is an all purpose individual high chair ideal for use on wood, steel, and concrete.

It is also well suited for TILT-UP applications.

They have been tested and approved for Department of Transportation(D.O.T) use.

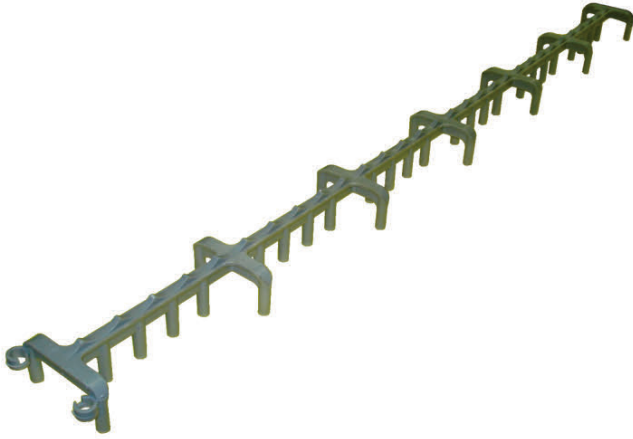
*\*Each chair can be used for 2 sizes.*

### UNIQUE FEATURES AND BENEFITS:

- The OCM Uni Chair has an open center which allows concrete to flow through the center of the chair to improve aggregate flow and concrete consolidation.
- Made from high strength plastic material, so they perform very well under normal loads and will not rust.
- They have angled legs to prevent torsion and buckling.
- Sizes above 6 1/2" have an added ring for improved strength and stability.
- Feet are tapered so there is minimum surface contact to make chairs virtually disappear when form face is stripped. Legs can also be stapled for added stability.
- Cradle shaped top to aid in positioning of rebar.
- Concrete gray color helps them to blend in with concrete color.
- Dual cradle head allows for 1 chair to be used for 2 different heights.  
Decreases amount of inventory, and increases flexibility for use of each chair.

OCM Part No.	Height	Box Qty
PHC.75-.75	3/4" - 3/4"	1,000
PHC1-1.5	1" - 1.5"	500
PHC1.25-1.75	1.25" - 1.75"	500
PHC2-2.5	2" - 2.5"	250
PHC2.25-2.75	2.25" - 2.75"	250
PHC3-3.5	3" - 3.5"	300
PHC3.25-3.75	3.25" - 3.75"	200
PHC4-4.5	4" - 4.5"	200
PHC4.25-4.75	4.25" - 4.75"	200
PHC5-5.5R	5" - 5.5"	200
PHC5.25-5.75R	5.25" - 5.75"	200
PHC6-6.5R	6" - 6.5"	200
PHC6.25-6.75R	6.25" - 6.75"	100
PHC7-7.5R	7" - 7.5"	100
PHC7.25-7.75R	7.25" - 7.75"	100
PHC8-8.5R	8" - 8.5"	100
PHC8.25-8.75R	8.25" - 8.75"	100
PHC9-9.5R	9" - 9.5"	100
PHC9.25-9.75R	9.25" - 9.75"	100

## Plastic Slab Bolster



### DESCRIPTION:

The OCM Plastic slab bolster is a heavy duty plastic slab bolster that can be used to support rebar in all types of slab or wall applications.

*\*Sold in 5ft. Lengths and 100ft per bundle.*

### UNIQUE FEATURES AND BENEFITS:

- Interlocking end tabs provide extra strong connection and enables continuous runs of slab bolster.
- Made from heavy duty yet flexible plastic material which will withstand heavy loads, but still flexible enough to bend 180 ° for side wall spacers and resistant to breaking and snapping.
- Wide footprint provides stability under load.
- Continuous protrusions on the top runner allows the user to consistently space rebar during placement and reduces rebar movement during placement.

OCM Part No.	Weight per LF lbs	Bundle Qty If
SBCOMP-75	0.10	100
SBCOMP-100	0.10	
SBCOMP-125	0.12	
SBCOMP-150	0.14	
SBCOMP-200	0.16	
SBCOMP-250	0.17	
SBCOMP-300	0.19	

## Plastic Paving Chairs



### DESCRIPTION:

The OCM Plastic Paving Chairs are a versatile Snap on Chair that is used for on-grade and Department of Transportation (D.O.T) work. This chair is available in black or white and it is ideal for highway paving applications.

OCM Part No.	Height	Box QTY
PC-225	2 1/4"	500
PC-325	3 1/4"	500

## Grade Chair with Base



### DESCRIPTION:

The OCM Grade Chair with Base is designed with a wide base ring to provide stability on loosely compacted or expansive soils.

### UNIQUE FEATURES AND BENEFITS:

- Made from high strength plastic material which provides good performance under loading conditions.
- "Snap-in top" locks rebar into chair for secure placement.
- Each chair comes in 2 height combinations to provide flexibility based on grading conditions and helps to reduce inventory.

OCM Part No.	Weight Per Box	Box Qty
GCCOMP-1.5-2	36	200
GCCOMP-2-2.5	39	200
GCCOMP-3-3.5	38	200
GCCOMP-3.5-4	39	200

## Wheel Spacers



### DESCRIPTION:

The OCM Wheel Spacers are ideal for use with rebar or mesh.

The WS-series can be used with rebar from #2 to #6.

The WSM-series can be used with 4 to 12mm (.16" to .47") wire.

#### **WS-series is for use with Rebar.**

OCM Part No.	Weight Per Box	Box Qty
WS-75	11	2,000
WS-100	10	1,500
WS-125	8	500
WS-200	16	500
WS-250	16	250
WS-300	20	250

#### **WSM-series is for use with Mesh.**

OCM Part No.	Weight Per Box	Box Qty
WSM-75	8	2,500
WSM-100	10	2,000
WSM-150	13	500



## Plastic Castle Chair



OCM Part No.	Height	Box Qty
PCC1.5-1.75	1-1/2" - 1-3/4"	100
PCC2-2.25	2" - 2-1/4"	
PCC3-3.25	3" - 3.25"	
PCC4-4.25	4" - 4.25"	

\*Supports on average over 600 lbs at Room Temperature

## Concrete Sleeves - Hole Outs

(Florida Only)



Description	Part#	Weight	Box Qty
3" X 8" Concrete Sleeve (Hole Out)	CS3X8	0.26	100
4" X 8" Concrete Sleeve (Hole Out)	CS4X8	0.38	60

# 1/2" REBAR SADDLES



The OCM Plastic Rebar Saddle is made from heavy duty plastic material. They can fit over #1/2" (#4) vertical Rebar, and can accommodate 1/2" (#4) rebar in the cradle. They are conveniently packaged in shelf ready inner bags of 200 pcs. Master box contains 2,000 pcs.



1/2" REBAR SADDLES				
Size	Part#	Weight	Inner Bag Quantity	Master Bag Quantity
#4 Bar	RSADDLE	.90/C	200 pcs	2,000 pcs

★ Packed in convenient bags of 200 pcs.

★ Master box contains 2,000 pcs.

★ Special Discount for skid quantities.



## Adjustable Plastic Screed Chair for 3/4" PVC

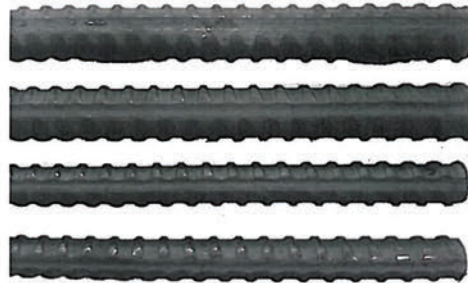


OCM Part No.	For PVC Pipe Size	Carton Qty
SCRCHAIR	3/4"	250

- Fits 2" x 4" lumber or 1-1/2" diameter pipe screeds.
- Includes a base, adjustable ring and a screed receiver.
- Designed to allow up to +/- 1 inch height adjustment.
- 1 O.D pvc pipe ( not included) can be cut to any height.



**OCM** ***Euro Rod***



The OCM **Form Tie Bar** is a high quality product used in Industrial formwork systems, lost anchoring solutions, special connections and applications for cast in place and precast.

OCM supplies a hot rolled, right flat deep thread bar, which assures the best effect for self cleaning after removal.

**OCM offers:**

- $\phi$  15mm (5/8") Diameter X 5.8m (19 ft) Length (bundles of 100 bars)
- $\phi$  20mm (7/8") Diameter X 5.8m (19 ft) Length (bundles of 75 bars)
- Marking and traceability of the product

**On request**

- Special lengths & bundling
- Protection against corrosion : electrogalvanizing

**Technical specification**

Grade \*\*, ST \*\*/\*\*

	Imperial			Metric		
	5/8"	7/8"	inch	15	20	mm
Diameter						
Yield load min.	36,000	64,100	lb	160	285	kN
Rp0.2 min.	130,500	130,500	psi	900	900	Mpa
Ultimate load min.	44,000	77,800	lb	196	346	kN
Safe Working Load	22,000	38,900	lb	98	173	kN
Rm min.	247,500	247,500	psi	1100	1100	Mpa
lb/Ft	0.9	1.7	lb/Ft	1.4	2.48	kg/m
Elongation A <sub>gt</sub>	4	4	%	4	4	%
Elongation A <sub>10d</sub>	7	7	%	7	7	%
KCV min.at -20	28	28	J	28	28	J

※SWL provides a safety factor of approximately 2 to 1.

**Service**

- Worldwide shipments including all administrative formalities
- Fast communication, flexibility & reliability
- On time delivery

## Euro Rod



-Hot-Rolled, Bendable, Weldable

OCM Part No.	Size Inch	Length	Weight per foot lbs
62ER15	5/8" (15mm)	19'	3.3
875ER20	7/8" (20mm)	19'	5.7

## Euro Rod Combo Plate



OCM Part No.	Size Inch	Washer Size	Weight per pcs lbs	Safe Working Load lbs
ERCP15	5/8" (15mm)	120mm x 120mm	2.78	21,900
ERCP20	7/8" (20mm)	120mm x 120mm	2.95	39,200

SWL provides a safety factor of approximately 2 to 1.

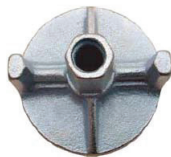
## Euro Rod Single Wing Nut



OCM Part No.	Size Inch	Dimension (W x H)	Weight per pcs lbs	Safe Working Load lbs
ERSWN15	5/8" (15mm)	90mm x 60mm	0.75	21,900
ERSWN20	7/8" (20mm)	90mm x 60mm	2.40	39,200

SWL provides a safety factor of approximately 2 to 1.

## Euro Rod Round Wing Nut



OCM Part No.	Size Inch	Dimension Dia.	Weight per pcs lbs	Safe Working Load lbs
ERWN15	5/8" (15mm)	100mm	2.38	21,900
ERWN20	7/8" (20mm)		2.69	39,200
62WNERG	5/8" (15mm)	130mm	2.70	21,900
87WNERG	7/8" (20mm)		3.10	39,200

SWL provides a safety factor of approximately 2 to 1.

## Euro Rod Hex Couplers



Description	OCM Part No.	Weight lbs.	Box Qty
Euro Rod Short (50Mm) Hex Coupling Nut For 5/8" (15Mm) Rod	ERSHC15	0.42	75
Euro Rod Long (100Mm) Hex Coupling Nut For 5/8" (15Mm) Rod	ERLHC15	0.84	40

## Euro Rod Hex Flange Nuts



Description	OCM Part No.	Weight lbs.	Box Qty
Euro Rod Flange Nut With Bottom Flange (25Mm) For 5/8" (15Mm) Rod	ERFN15	0.26	125

**Euro Rod Round Nuts with Hex End**



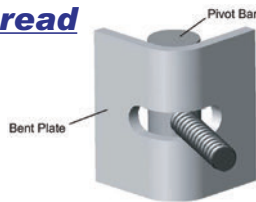
Description	OCM Part No.	Weight lbs.	Box Qty
Euro Rod Round Nut With Hex End(106Mm) For 5/8" (15Mm) Rod	ERRN15	1.15	25

**Euro Rod She Bolt Cones**



Description	OCM Part No.	Weight lbs.	Box Qty
Euro Rod Short (75Mm) Shebolt Cone For 5/8" (15Mm) Rod	ERSSC15	0.75	45
Euro Rod Long (100Mm) Shebolt Cone For 5/8" (15Mm) Rod	ERLSC15	1.26	25

**Weld Angle Bracket - Euro Thread**



	OCM Part No.	D Size	Weight per each lbs	Safe Working Load lbs
Pivot Bar	62APBP	5/8" or 15mm	2.15	22,400
	87APBP	7/8" or 20mm	2.10	39,200
Bent Plate	AWB24-1	5/8" or 15mm	1.90	9,000
	AWB24-1	7/8" or 20mm	1.90	18,000

**4x4 Shore Clamp**



OCM Part No.	Weight per pcs lbs
SCLAMP4x4	3.00

**4x4 Shore Jack**



OCM Part No.	Weight per pcs lbs
SHOREJACK4X4	19.00

**Wire Shore Holder**



OCM Part No.	Carton Qty	Weight per pcs lbs
OCM-WH	25	1.65

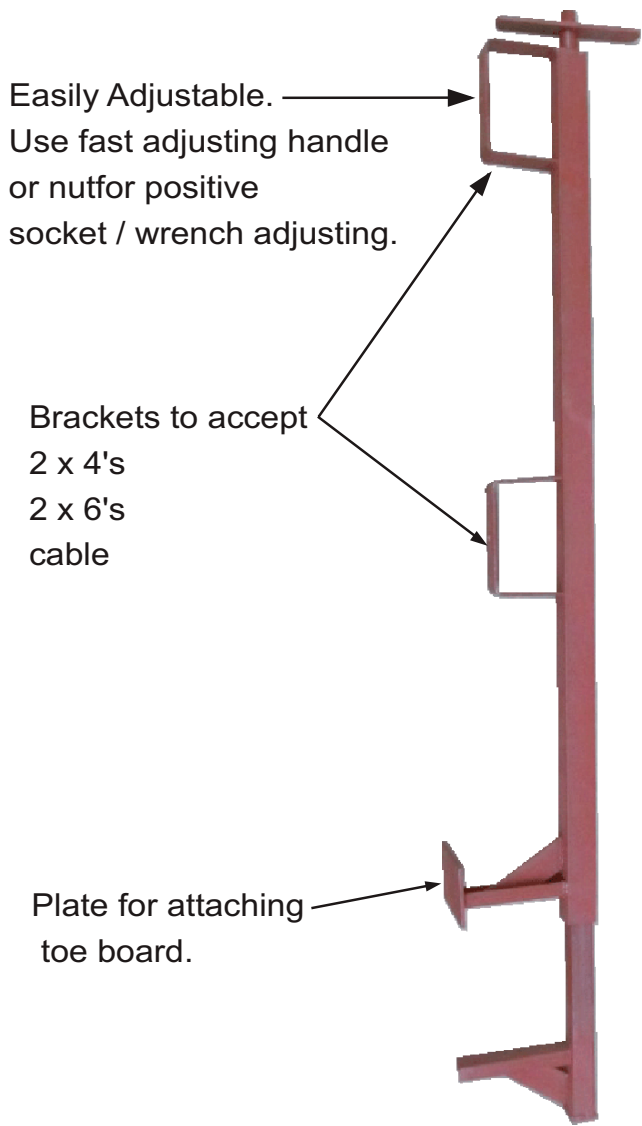
**Reshore Spring**



OCM Part No.	Weight per pcs lbs
OCM-RSS	0.2

# **Guard Rail Post Bracket**

## **Slab Grabber - Standard Duty**

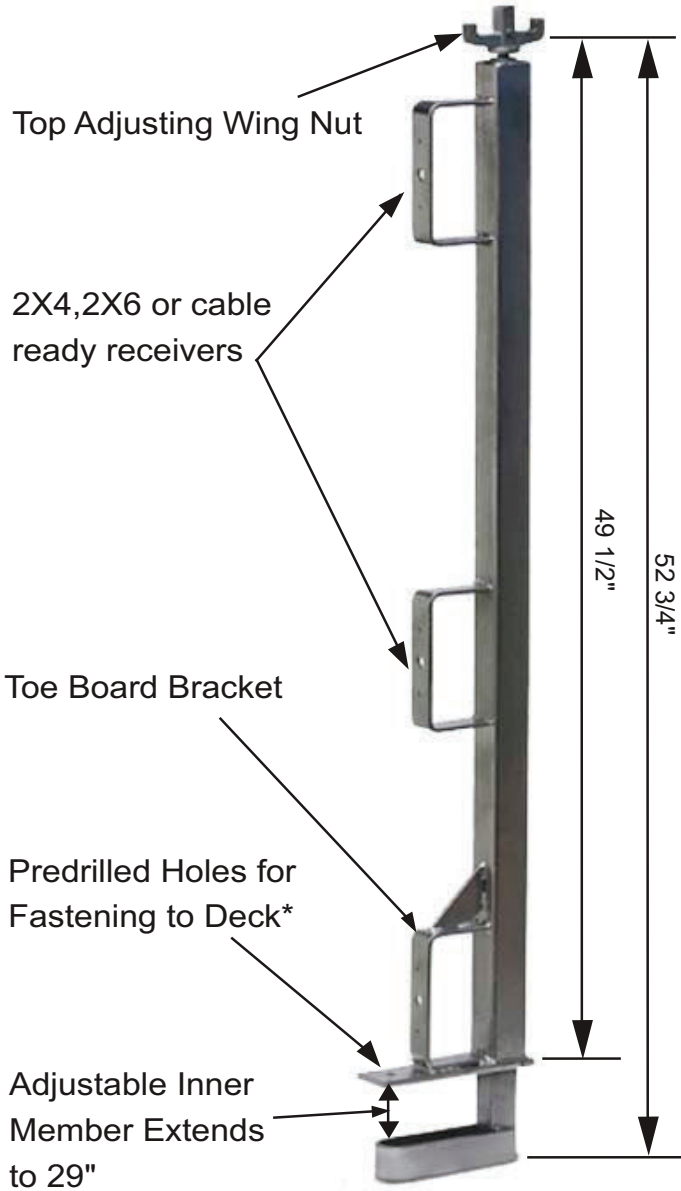


- Quick adjust handle and rugged steel construction for fast attachment and a positive grip on the slab
- Adjustability for use on up to 36" slabs
- Installation requires 20 ft/lbs of torque to secure Slab Grabber to slab edge
- Plate to mount toe board when required or when surface slope is more than 4/12(vertical/horizontal) and if there is a risk of any type of work material to fall to a lower level
- Maximum spacing of 8 ft per OSHA spec
- Height from top of slab to top of rail is 46"
- Meets all applicable OSHA and ANSI Standards

OCM Part No.	Description	Weight lbs	Skid
OCM-GRP-STD	Guard Rail Post Bracket - Standard Duty Primer Painted	22.00	200

- \*WARNING: Rail Post must be secured to deck with proper fasteners to ensure safety.
- \*WARNING: Use of equipment for unintended applications could result in serious injury or death. NEVER make any connections to guardrail system.
- \*WARNING: NEVER lean or climb on guardrail systems.

# Guard Rail Post Bracket Slab Grabber - Heavy Duty



- Quick adjust handle and rugged steel construction for fast attachment and a positive grip on the slab
- Bracket preinstalled to mount toe board when required or when surface slope is more than 4/12 (vertical/horizontal) and if there is a risk of any type of work material to fall to a lower level
- Adjustability for use on up to 36" slabs
- Maximum spacing of 8 ft per OSHA spec
- Height from top of slab to top of rail is 46"
- Meets all applicable OSHA and ANSI Standards

OCM Part No.	Description	Weight lbs	Skid
OCM-GRP-HD	Guard Rail Post Bracket - Heavy Duty Galvanized	26.00	200

\*WARNING: Rail Post must be secured to deck with proper fasteners to ensure safety.

\*WARNING: Use of equipment for unintended applications could result in serious injury or death. NEVER make any connections to guardrail system.

\*WARNING: NEVER lean or climb on guardrail systems.

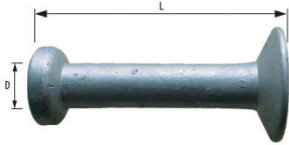
## Coil and Ferrule Inserts



### Types Available:

- Coil Loop Inserts
- Flared Coil Loop Inserts
- Criss Cross Coil Inserts
- Thin Slab Lifting Inserts
- Thin Slab Ferrule Inserts
- Ferrule Loop Inserts

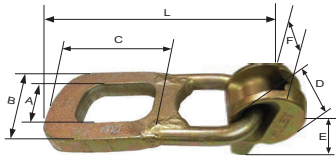
## Precast Lifting Anchors



OCM Part No.	D Size	L Length	Weight per pcs lbs	Safe Working Load lbs
PLA375	3/8"	2-5/8" - 9-1/2"	17	1,700 - 2,000
PLA562	9/16"	2-3/4" - 11"	42	2,100 - 4,000
PLA075	3/4"	2-3/4" - 19"	135	4,000 - 8,000
PLA109	1-3/32"	4-3/4" to 26-3/4"	305	6,400 - 16,000
PLA150	1-1/2"	10" - 19-3/4"	728	25,000 - 40,000

SWL provides a safety factor of approximately 4 to 1.

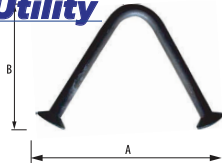
## Lifting Eye



OCM Part No.	LIFTING BODY ID	SAFE WORK LOAD	A	B	C	D	E	F	G
#	tons	lb	in.	in.	in.	in.	in.	in.	in.
PLA1TRC	1-1.3 T	2,000	1.87	2.95	2.80	2.20	2.17	1.30	6.48
PLA2TRC	1.5-2.5 T	4,000	2.52	3.86	3.35	2.68	2.76	1.65	8.09
PLA4TRC	3.0-5.0 T	8,000	2.76	4.65	3.45	3.46	3.39	2.24	9.33
PLA8TRC	6.0-10.0 T	16,000	3.74	10.24	4.76	4.41	4.61	2.87	13.72
PLA16TRC	12.0-20.0 T	32,000	4.65	7.32	5.91	5.98	6.10	4.33	17.36
PLA25TRC	25.0-32.0 T	50,000	6.89	10.59	7.44	7.68	8.43	6.02	22.99

SWL provides a safety factor of approximately 5 to 1.

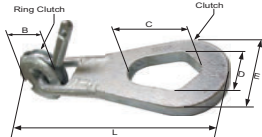
## Precast Utility Anchors



OCM Part No.	A	B	Minimum Panel Thickness		Safe Working Tension Load		Safe Working Shear Load	
			90°	45°	90°	45°	90°	45°
UA4444	5-1/4"	3-1/8"	4"	3-1/2"	1,125	795	1,725	795
UA5444	9-3/8"	3-3/4"	5"	4-1/4"	3,000	2,100	6,750	2,100
UA6444	7-3/8"	4-3/4"	5-5/8"	4-1/4"	4,000	2,825	9,000	2,825
UA5671	9-1/2"	3-3/4"	5"	4-1/4"	3,750	2,650	7,500	2,650
UA6671	7-3/8"	4-3/4"	5-5/8"	4-1/4"	5,000	3,525	10,000	3,525
UA8671	9-3/4"	6-3/4"	7-5/8"	6"	10,000	7,075	12,000	7,075

SWL provides a safety factor of approximately 4 to 1.

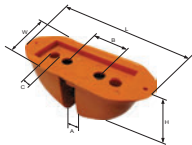
## Ring Clutches



OCM Part No.	RING CLUTCH SYSTEM	CLUTCH ID ALLOWABLE LOAD RANGE	TOTAL LENGTH (L)	Safe Working Tension Load		Safe Working Shear Load		WEIGHT EACH
				B	C	D	E	
#	tons	#	in.	in.	in.	in.	in.	lb
OCMFLRC-2T	2T	2-2.5T	10-15/16	3-1/8	3-1/16	2-5/32	3-3/4	4.60
OCMFLRC-4T	4T	4-5T	12-31/32	4-1/16	3-15/16	2-15/32	4-19/32	9.25
OCMFLRC-8T	8T	8-10T	17-3/8	5-7/8	5-1/4	3-3/8	6-11/32	22.80

SWL provides a safety factor of approximately 5 to 1.

## Recess Member



OCM Part No.	RING CLUTCH SYSTEM	CLUTCH ID	LENGTH (L)	HEIGHT (H)	WIDTH (W)	SLOT WIDTH (A)	HOLE DISTANCE(B)	HOLE DIAMETER (C)	WEIGHT EACH
#	tons	#	in.	in.	in.	in.	in.	in.	lb
RM-1TR	1T	2.5T	3-3/4	1-15/16	1-11/16	3/16	1-11/16	0.406	0.20
RM-2TR	2T-2.5T	2.5T	3-3/4	1-15/16	1-11/16	3/8	1-11/16	0.406	0.20
RM-4TR	4T-5T	5T	4-7/8	2-1/4	2-3/16	5/8	1-3/8	0.406	0.44
RM-8TR	8T-10T	10T	6-1/2	3-1/4	3-1/2	3/4	1-15/16	0.406	1.25

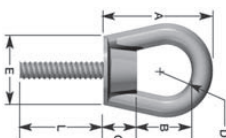
## Coil Eye Nut



OCM Part No.	D Size	H Height	Weight per pcs lbs	Safe Working Load lbs
50CEN	1/2"	3-1/4"	0.7	2,700
75CEN	3/4"	3-1/2"	1.2	3,600
100CEN	1"	5"	2.9	7,200
125CEN	1-1/4"	6-1/4"	6.0	10,800

SWL provides a safety factor of approximately 2 to 1.

## Coil Eye Bolt



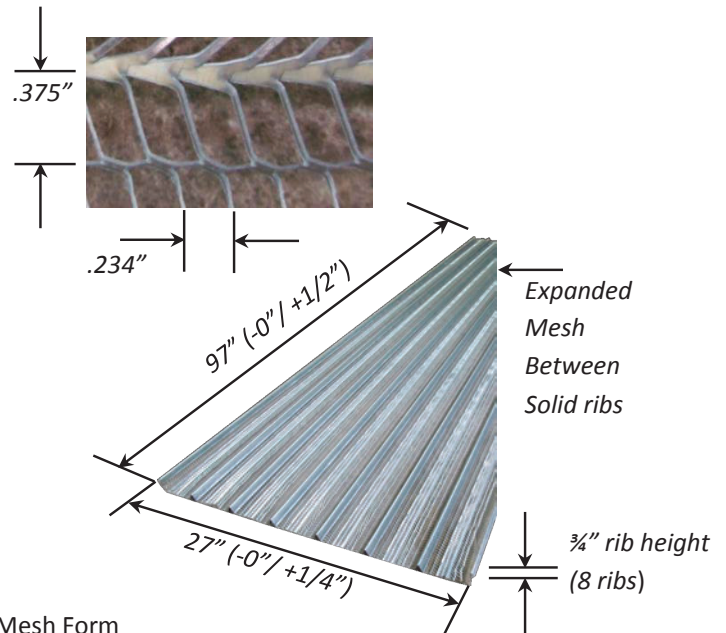
OCM Part No.	Bolt Diameter in.	Safe Working Load	A in.	B in.	C in.	D in.	E in.
50CEB	1/2	2,700	3 1/4	1 5/8	1	3/4	2
75CEB	3/4	3,600	3 1/2	1 3/4	1	3/4	2
100CEB	1	7,200	5	2 3/4	1 1/4	1	3

SWL provides a safety factor of approximately 5 to 1.

**OCM Mesh Form**  
(Equivalent to Stay Form)

**Permanent Stay in Place Concrete Forming System**

The OCM Mesh Form is made of simple steel form panels that conform easily into multiple configurations to accommodate shapes for keyways or any unusual configurations. The panels can be used to form curves, radiuses or corner bends. They can also be cut to size specifications. One of the innovative features of the OCM Mesh Form is the fact that you can pour one side today and the next side tomorrow. The forms stay in place and area never stripped. This can save the project time and money. It is always an advantage if a trade can start a project and work uninterrupted to the completion of their portion of the project. Applications for the OCM Mesh Form are: Pedestal Foundations; Retaining Walls; Steel Tower Foundations; Wind Force Power Generator Foundations; Underground beams, footings, pressure-proof panels, concrete stoppers, mat foundations and all concrete structures constructed on the ground.



OCM Mesh Form

Sheet Size	27" x 97"
Surface	18 Sq Ft/Sheet
Pallet/Ordering	250 sheets/4500 Sq Ft per skid; 5 sheets(90 Sq Ft)
V-Ribs 8 per sheet and 3/4" Deep and 3 7/8" on center	
Tie Wire Spacing	6"
Support Spacing(20" high pour)	24" at 210 psf
Sheet Thickness	26 Ga (0.0217 inch, when Galvanized)
Weight Per Sq Ft	0.66 Lbs.
Weight Per Sheet	11.90 lbs per sheet



## **Form Release**



## **OCM Turbo Release**

A light, clean, mineral oil based, odorless, chemically - reactive architectural form release agent. VOC compliant and formulated for use on a wide variety of forming materials. Non-staining.  
 General Uses : Commercial & residential concrete forming systems.  
 Precast concrete.  
 Commercial form liners.

<b>OCM Part No.</b>	<b>Bulk</b>
OCMTR275	275 GAL TOTE
OCMTR55	55 GAL DRUM
OCMTR55	5 GAL PAIL

## **OCM Quick Strip**

A clean, ready to use, petroleum based, chemically - neutral architectural concrete form release agent. VOC compliant. Extends form life and is non-staining.  
 General Uses : Commercial & residential concrete forming systems.

<b>OCM Part No.</b>	<b>Bulk</b>
OCMQS275	275 GAL TOTE
OCMQS55	55 GAL DRUM
OCMQS55	5 GAL PAIL

## Concrete Tremie Hoppers & Accessories



All plastic products are rotational molded and made with industrial grade polyethylene for multiple uses. Hoppers are steel reinforced for added strength during transport and/or positioning at the jobsite.

### HEAVY DUTY CONCRETE HOPPER

Size	Discharge	Part#	Weight
36" x 36"	8"-12"	CHHD36-8-12	18 lb

Ribs on discharge allow the elephant trunk to be attached directly to the PVC hopper.



### LIGHT DUTY CONCRETE HOPPER

Size	Discharge	Part#	Weight
36" x 36"	8"-12"	CHLD36-8-12	18 lb

Ribs on discharge allow the elephant trunk to be attached directly to the PVC hopper.



### PVC TREMIE PIPE

Size	Part#	Weight
8" dia. x 4' tall	CHPIPE-8X4	9 lb
12" dia. x 4' tall	CHPIPE-12X4	11 lb



### METAL ELEPHANT TRUNK COLLAR

Diameter	Part#	Weight
8"	CHMETC-8	4.0 lb
12"	CHMETC-12	5.0 lb



### STEEL ADJUSTABLE BAND CLAMP

Size	Part#	Weight
Fits 6", 8", 12" Discharge	CHSABC-6-8-12	11lb

The steel adjustable band clamp can be used to attach the elephant trunk to the hopper or metal collar. The clamp will fit all discharge sizes (6", 8", 12")



### PVC ELEPHANT TRUNK

Size	Part#	Weight
8" x 50'	CHTRUNK-8	44 lb
12" x 50'	CHTRUNK-12	65 lb



OCM, Inc.  
1215 Henri Drive, Wauconda, IL 60084  
Telephone: 866-457-5710 Fax: 847-462-4259  
www.ocm-inc.com

# Masonry Wire Ladder Mesh

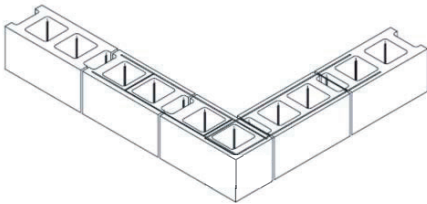
## Prefabricated Tees and Corners

### Ladder Mesh



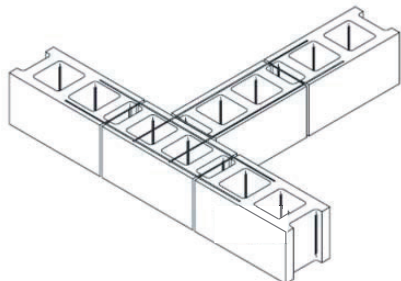
OCM Part No.	Description	Qty per Bundle
MWLM-8MG	8" MILL GALV X 10'-0"	500 LF
MWLM-8HDG	8" HOT DIP GALV X 10'-0"	500 LF
MWLM-12MG	12" MILL GALV X 10'-0"	500 LF
MWLM-12HDG	12" HOT DIP GALV X 10'-0"	500 LF

### Fabricated Corners



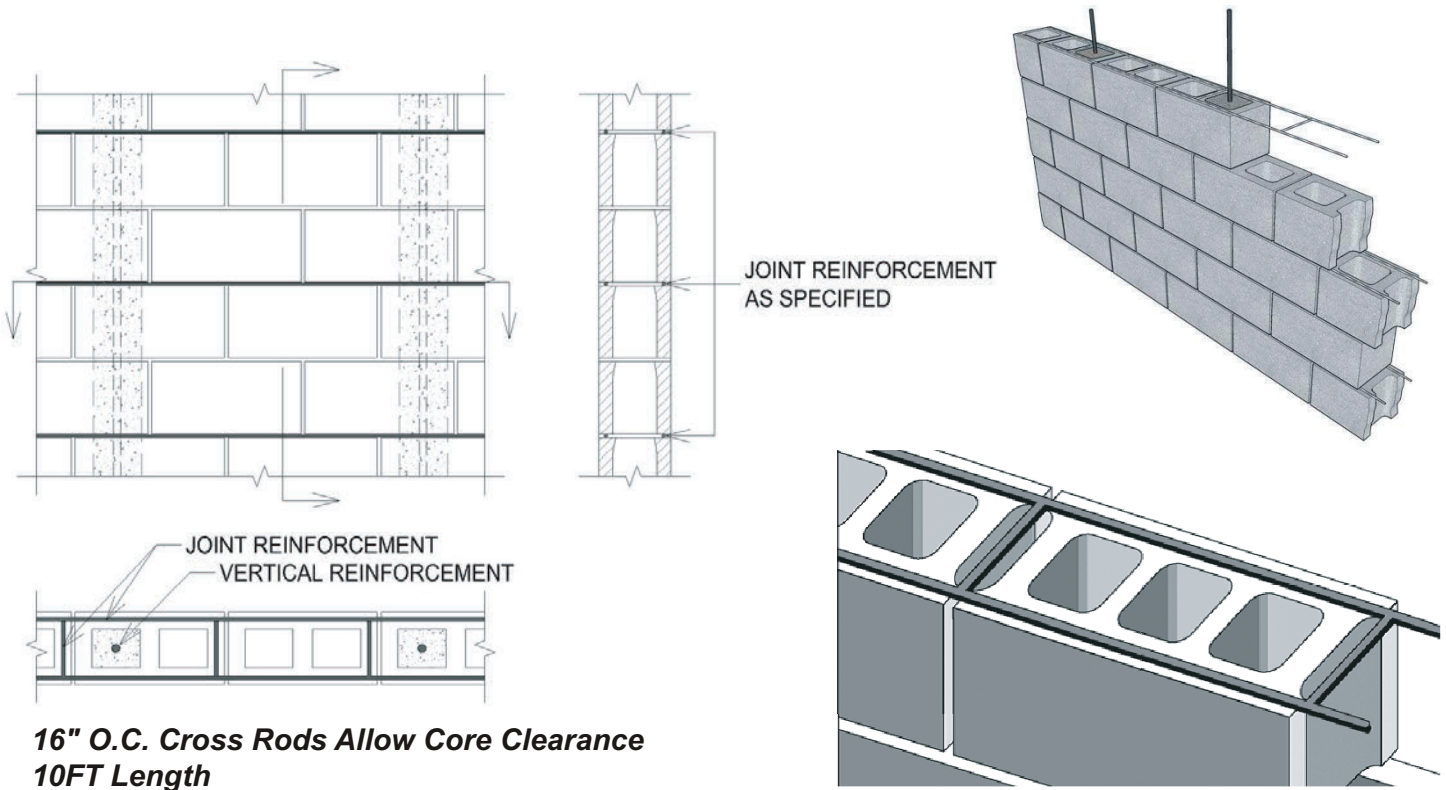
OCM Part No.	Description	Qty per Bundle
MWLMC-8MG	8" MILL GALV CORNER - 32" X 32"	25
MWLMC-8HDG	8" HOT DIP GALV CORNER - 32" X 32"	25
MWLMC-12MG	12" MILL GALV CORNER - 32" X 32"	25
MWLMC-12HDG	12" HOT DIP GALV CORNER - 32" X 32"	25

### Fabricated Tees



OCM Part No.	Description	Qty per Bundle
MWLMT-8MG	8" MILL GALV TEE - 32" X 32"	25
MWLMT-8HDG	8" HOT DIP GALV TEE - 32" X 32"	25
MWLMT-12MG	12" MILL GALV TEE - 32" X 32"	25
MWLMT-12HDG	12" HOT DIP GALV TEE - 32" X 32"	25

## Ladder Mesh For Single Wythe Block Wall

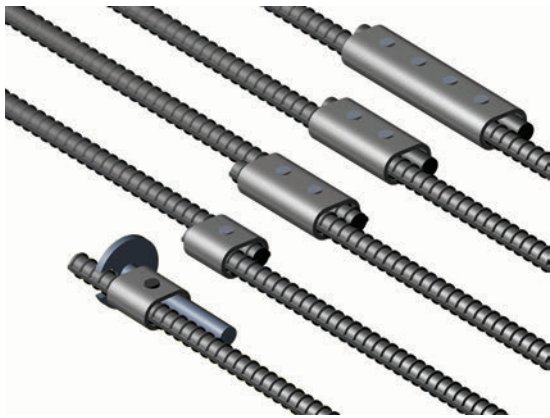


**16" O.C. Cross Rods Allow Core Clearance  
10FT Length**

Material Conformance	Additional Information
<p><u>ASTM A951/A951M</u> -(Standard Specification for Steel) Wire For Masonry Joint Reinforcement <u>ASTM A82/A82M</u> - (Cold Drawn Steel Wire) Tensile Strength -80,000 psi Yield Point - 70,000 psi Coatings conform to the following specifications: <u>ASTM A641/A641M</u> (0.1 oz/Ft<sup>2</sup>) for Mill Galvanized coating <u>ASTM A153/A153M-B2</u> (1.5 oz/Ft<sup>2</sup>) for Hot-Dip Galvanized</p>	<p><u>Wire Diameter:</u> - 9Gauge (3.7mm) side rods and cross rods. - Cross Rods welded at 16" on center. - First Cross Rods welded 12" in from each end to allow lap spaces per code requirements. - Manufactured from a minimum of 95% recycled material.</p>

# OS-SPLICE CLIP METHOD

A new method for joining small diameter reinforcing bars.  
May be used in splicing tension bars, column ties, and stirrups.



Installation Tool

Studies of recent earthquakes in both Japan and the United States made by the Architectural Institute of Japan have indicated the advisability of using continuous tie bars in columns. This may be accomplished through the use of continuous spiral ties or by connecting the ends of square column ties.

The OS Splice Clip provides a cold method for making tie connections which will exceed the yield strength of the bars and will not alter the metallurgical properties of the steel.

Under extreme compressive loads such as those experienced in columns under earthquake loading, continuous ties help restrain the concrete within the interior of the column.



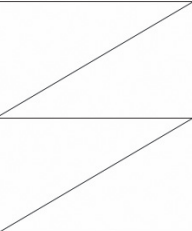




## Feature

- Can be used in Tension and Compression Zone
- It is an industrial method with high reliability of joint.
- Shear reinforcement can be applied to to main rebar.
- Installation tool is portable and compact.
- Electric Installation Tool is easy to use, and does not require Hydraulic Power Pack.
- Anyone can construct it easily.
- Weather does not effect installation.

## Performance

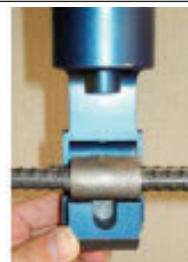
A reliable Connection is secured, Exceeding 135% of actual yield of the steel.



	#3	#4	#5	#6	#7	#8
Lap Splicing Type						
Butt Splicing Type						
Rebar End-Anchor Type						

## Installation




① Reinforcing bars are set on the sleeve, and the machine with the pressure which a wedge was set on is given to joint part.



② The one with the pressure is done until the rest head of the wedge is less than 3mm.

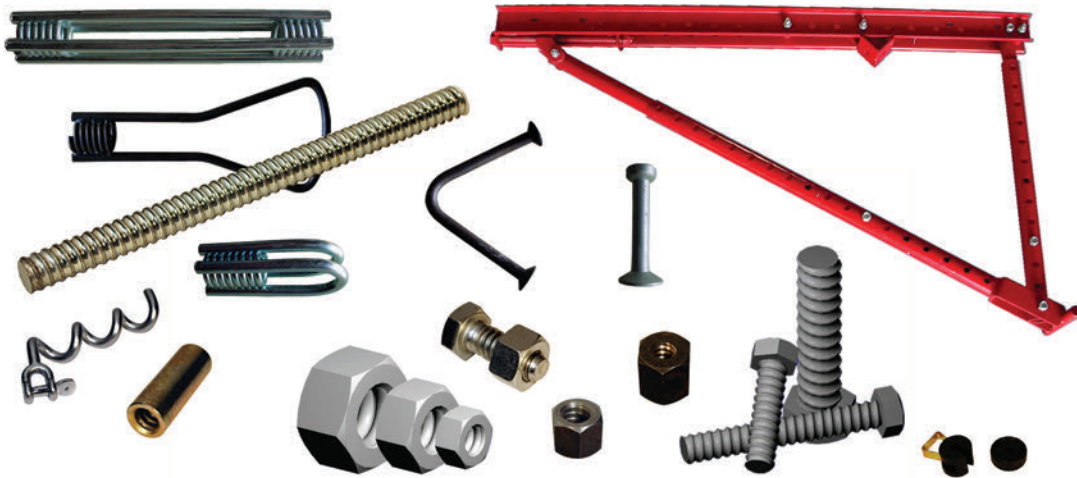


## Installation tool

Bar Size	# 3 - # 4	# 5 - # 6	# 7 - # 8
			
Type	Battery-Type Plug-Type	Battery-Type Plug-Type	Plug-Type
Total length	495 mm	620 mm	658 mm
Maximum pressure	8 ton	12 ton	18 ton

## Manufactured To Your Specifications

**Solid & Hollow Screw Jacks • Scaffolding Accessories  
Castings • Forgings • Metal Stamping  
Welded Wire Products • Custom Parts**



## **FORMING PRODUCTS**



- Product Knowledge
- Manufacturing Experience
- Custom Parts & Specialty Items
- Direct Ship to Third Party
- Tracking Shipments
- Stock & Release Programs
- Quality Assurance Performed In House
- Customer Packaging
- Inventory Financing

Our goal is to provide great customer service, quality products and very competitive pricing. Please contact us with any inquiries regarding current products, specialty items or large volume quotes. We will try to meet and exceed any challenge you provide us with.

# OCM Worldwide



◆ OCM's manufacturing, strategic alliances, distribution and divisional locations worldwide.

## A GLOBAL LEADER IN METAL WORKING

**OCM, Inc.** is a subsidiary of OKABE Co., LTD. OKABE was founded in 1917 in Japan and has been a full service manufacturer and distributor of concrete construction supplies, and a world leader in the Metal Forming Industry for over eighty years. Through capital investment and strategic partnerships, Okabe has achieved sales of over one billion dollars and employs over 1,500 people worldwide. OKABE uses a broad range of metal forming technologies to provide a diverse selection of engineered fasteners and components.

OKABE Markets Include: Construction Industry, Concrete Forming Accessories, Waterstop Products, Scaffolding & Shoring Components, Rebar Splicing, Transportation Industry, Heavy and Medium Duty Truck O.E.M.'s, Light & Heavy Duty Trailer O.E.M.'s, Heavy Duty Truck and Trailer Aftermarkets, Automotive & Light Truck O.E.M.'s, Axle & Suspension O.E.M.'s, Wheel, Hub & Drum O.E.M.'s, Agricultural & Construction Machinery O.E.M.'s, & Civilian & Military Marine & Shipbuilding Industries.

**OCM's** worldwide manufacturing base coupled with a North American distribution network provides our customers with sophisticated design support, engineered quality and globally competitive products. **OCM's** global quality policy is one of continuous education, statistical analysis and evaluation of our systems, processes and techniques. We are dedicated to provide the highest quality products, at a competitive price, through innovation and technical expertise and the utmost in customer care. We invite you to visit our website [www.ocm-inc.com](http://www.ocm-inc.com) or contact our sales department at **1-866-457-5710** with your product questions.

**OCM, Inc.**

1215 Henri Drive, Wauconda, IL 60084

Telephone: 866-457-5710 • Fax: 847-462-4259

[www.ocm-inc.com](http://www.ocm-inc.com)

### Stocking Locations:

#### Denver

4120 York St.  
Denver, CO 80216

#### Northern California

814 Striker Ave. Suite B  
Sacramento, CA 95834

#### Atlanta

605 Wesleyan Drive SW  
Atlanta, GA 30336

#### Southern California

2342 E. Valencia Dr.  
Fullerton, CA 92831

#### Dallas

11625 Columbia Center  
Dallas, TX 75229

#### New Orleans

1125 Barataria  
Houma, LA 70360

#### Portland

1525 SE 10th Ave.  
Portland, OR 97214

#### New Jersey

192 Clifford St.  
Newark, NJ 07105

#### Houston

5615 Armour Drive  
Houston, TX 77020

#### Ft. Lauderdale

200 S.W. 12th Avenue  
Pompano Beach, FL  
33069